





**Autumn Term:** Monday 22nd September to Friday 5th December 2014

**Spring Term:** Monday 19th January to Friday 27th March 2015

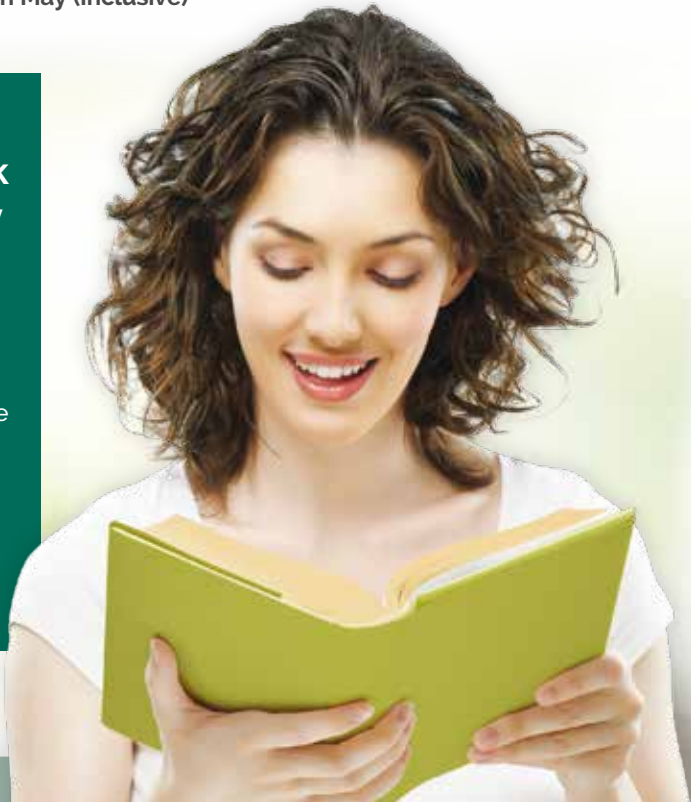
**Summer Term:** Monday 20th April 2015 to Friday 19th June 2015

There will be **NO CLASSES** held during the Autumn, Spring and Summer Half Term breaks or Bank Holidays, the dates of which are as indicated below:

**Half Terms:** 27th October to 31st October 2014 (Inclusive)  
16th February to 20th February 2015 (Inclusive)  
25th May to 29th May (Inclusive)

## No classes will be held on bank holiday 4th May 2015

Some classes may start earlier or finish later than the dates mentioned above. Please refer to the course dates mentioned in this prospectus for the actual start date of your course and the number of sessions that are to be held.



Welcome to the  
Guernsey College of Further Education

# Adult Education 2014/2015 Prospectus



I am delighted to present to you the course guide for the Adult Education provision offered for the 2014/2015 academic year. As the new Chief Executive and Principal of the Guernsey College of Further Education I am extremely proud of the breadth of the programmes offered through this portfolio of Adult Education courses, and I hope that you will find one or more options that interest you enough to join us during this academic year.

Whether you are a returning student or joining the Guernsey College of Further Education for the first time, I would like to offer you a very warm welcome. I hope that you will find your time at the College a fulfilling, enjoyable and enriching experience. Whether you are studying for your own personal development, or perhaps seeking to learn new skills to improve your career prospects, or would like to gain a new qualification, the Guernsey College of Further Education is here to support you reaching your full potential.

Most of the award bearing courses we offer include a wide variety of part time and flexible learning opportunities, these courses are not

## We are keen to develop new and exciting learning opportunities for the future.

included in this brochure. Consequently, I am delighted to extend an invitation to you to visit our newly developed website for further details of our course programmes as it may be here that you find exactly

what you are looking for. Our vision for the future of the College remains embedded in our core values of high quality, accessibility

and value for money learning opportunities. Based on this philosophy I would be most grateful to receive your views about the future of your FE College. During the 2014/15 academic year the College Leadership team will

embark on an exciting new era for the College and its future. You may contribute to the strategic direction of the College by emailing your comments and views to [future@gcfe.net](mailto:future@gcfe.net), or using the College website, [www.guernseycollege.ac.gg](http://www.guernseycollege.ac.gg). I would really appreciate it if you could share your lifelong learning plans to enable us to be responsive to your needs.

For over ninety years the Guernsey College of Further Education has provided vital educational and recreational courses for islanders. In addition to keeping many of the popular offers, the College is keen to develop new and exciting learning opportunities for future. So, if you are interested in a programme but you cannot find it in our prospectus please let us know.

I would like to take this opportunity to thank Jane Walden and her team for arranging the course programme, in this year's prospectus, for your consideration. I very much look forward to welcoming you to the Guernsey College of Further Education and look forward to working with you, towards a better and brighter Guernsey College of Further Education.

## For over ninety years the Guernsey College of Further Education has provided vital educational and recreational courses for islanders.

As a key step in the vision for Guernsey's Tertiary Education, an independent board of governors has been appointed. The short term ambition of the board is to work with both the States Education Team and the College to create a framework whereby the College becomes fully responsible for all parts of its own program and delivery of its teaching and education to all students.

This important progress, with many potentially positive developments, will create an exciting time of benefit to all students, both current and those who we welcome at the start of the year. In making these changes we plan to involve everyone, particularly staff and students, and hope that you will all participate as we move forward. We further hope that you will learn what you expect, enjoy

your challenges and wish to contribute to both your own and the future experience of students. On behalf of the Board, I wish all students of the College of Further Education an enjoyable and fulfilling experience.



**Julian Winser**  
Chairman of the Board of Governors

# Looking to give your career a boost?

## Or looking to change direction?

Let the **Guernsey College of Further Education** help you! We have a range of vocational part-time courses on offer, such as.....



### Hospitality & Catering

Steve Bacon and his team offer a range of catering courses for all skill levels, please contact him on 737500 or [steveb@gcfe.net](mailto:steveb@gcfe.net)

### IT courses

We can offer a series of Professionally Accredited Courses

- Microsoft MCTS
- CompTIA – A+, Network + and Security +
- Cisco CCNA

**Contact: Chris Torode 737500 or [christ@gcfe.net](mailto:christ@gcfe.net) or Kate Sole [kate.sole@gtg.gg](mailto:kate.sole@gtg.gg) to discuss your requirements**

### Hairdressing and Beauty Therapy

We have a range of hair and beauty courses, such as:

- Part-time Hairdressing over 2 years
- 1 year Full-time Level 2 Beauty Therapy
- Body Massage
- Acrylic Nails

**Contact: Jane Fears on 749940 or [janef@gcfe.net](mailto:janef@gcfe.net)**

### Finance, Business & HR

#### ACCA Foundations in Accounting

Introductory and Intermediate classes to develop your professional career in Accountancy

#### ICSA, COFA and DOFA

Foundation qualifications at Certificate and Diploma level providing an introduction to the offshore finance sector

#### IDFA

5 module course at Level 4 developed to aid understanding and knowledge of financial services industry.

#### BTEC level 3 in Business Studies

Range of business related modules including, introduction to marketing, business communications, HR & finance

#### CIPD Level 3 & 5

Elementary & Intermediate studies to develop & extend your HR skills

**Contact: Yvonne Tanner on 749940 or [YvonneT@gcfe.net](mailto:YvonneT@gcfe.net)**

### Office Administration Skills

Gain essential skills for a busy office environment such as shorthand, wordprocessing, spreadsheets, filing, telephone techniques, reception duties

**Contact: Alison McDonald on 749940 or [alisonmcdonald@gcfe.net](mailto:alisonmcdonald@gcfe.net)**

### Flexible Learning

#### IT Skills and Secretarial Training

For the complete beginner to the advanced user, accredited courses in Keyboarding, Word, Excel, Powerpoint, Access, Publisher, Outlook, Internet Explorer.

**Contact: Sue Le Gallez on 749940 [suel@gcfe.net](mailto:suel@gcfe.net) or Mich Coumbe [michellec@gcfe.net](mailto:michellec@gcfe.net)**

### Management Studies

Hoping to progress into management? The **CMI Level 3 Diploma in First Line Management** will help new managers to gain the skills and confidence to progress their career.

Our **CMI Level 5 Diploma in Management & Leadership** gives you all the key skills and competencies you'll need to become an effective middle manager. >>

Call us to discuss these courses and other management programmes such as Stephen Covey's 7 Habits of Highly Effective People, Appraisal Skills, Interviewing Skills, Dealing with Difficult Situations, Performance Management

**Contact: Alison McDonald on 749940 or [alisonmcdonald@gcfe.net](mailto:alisonmcdonald@gcfe.net)**

## Initial Teacher Training

**Award in Education & Training at Level 3 & Certificate in Education & Training at Level 4**

Teacher training courses aimed at those wanting to teach or train in the 16+ sector

**Contact: Martine Ellis on 749940 or [martinee@gcfe.net](mailto:martinee@gcfe.net)**

## Health and Early Years Courses

**Interested in developing a career in the Social Care or Early Years sector?**

- L3 Diploma in the Early Years Education and Care (EYE)
- Certificate in preparing to work in Early Years
- L1 Child Care (Saturdays)
- CPD: for Child Care Sector
- Guernsey College Child Care Conference (Nov) L3 Health Trainers

**Contact: Lorraine Barker on 750259 or [lorraineb@gcfe.net](mailto:lorraineb@gcfe.net)**

## Art & Design

**Painting Masterclass**

Opportunity to develop skills and abilities in oil based work at intermediate and advanced level.

**Contact: Mark Cook on 750200 or [markc@gcfe.net](mailto:markc@gcfe.net)**

## English and Maths

Looking to improve your English and Maths skills and/or gain a recognised qualification?

Flexible opportunities available in both day and evening classes.

**Contact: Nicola Le Feuvre on 750200 or [nicolal@gcfe.net](mailto:nicolal@gcfe.net)**

## Mandarin

This year we will have some basic introduction to Mandarin.

A short course to allow you to have a basic working knowledge of the language.

Also a more advance programme for those who have some knowledge and want to develop further

**Please register your interest by calling: TEL: 737585**

## States of Guernsey Apprenticeship Scheme

The scheme contributed hugely to the workforce on the Island. Over the last academic year, 72 students completed their apprenticeship programme. Each year, approximately 300 students are undertaking an apprenticeship with the College of Further Education.

- **Engineering Trades**
- **Fabrication and Welding**
- **Motor trades (cars/bikes)**
- **Motor trades (body repair/paint spray)**
- **Architecture**
- **Building Trades:**
- **Electrical**
- **Carpentry & joinery**
- **Plumbing & heating**
- **Trowel trades**

- **Painting & Decorating (available through Highlands College)**
- **Catering**
- **Landscape Gardening**
- **Jewellery**
- **Hairdressing**
- **Electronics**

**For further information: <http://www.guernseycollege.ac.gg/apprenticeships.html>**

## FULL TIME COURSES

Did you know that your College of FE offers a range of full time courses across a number of vocational areas? Providing opportunity to study at Level 3, 2, 1 or Entry Level, students undertaking these qualifications have excellent opportunity to progress into full time employment opportunities or onto higher level courses, including university. The college educates approximately 450 full time students each academic year and is very proud of the retention, achievement and success rates of the learners. As a full time learner you can expect a full enrichment and entitlement package which develops the wider employability and study skills that give College of FE learners a foot up onto the next step in their career.

**More information on our full time courses in Access, Administration, IT, Hair & Beauty, Sport, Business, Engineering, Trades, Performing Arts, Health & Social Care, Childcare, Foundation Learning, Art & Design and Creative Technology is available by visiting [www.guernseycollege.ac.gg](http://www.guernseycollege.ac.gg).**

## Course Fees

To ensure the College meets its Financial Transformation Programme targets, courses fees are levied to cover the full cost of the course. This applies to Adult Education and part-time courses.

**An enrolment fee of £30 is levied on all apprenticeship and full-time courses.**

## Open Days November 2014

If you have not quite seen what you are looking for, please call us anyway, we will aim to provide you with advice, information and guidance on courses to meet your needs –TELEPHONE: 737500

**DELANCEY CAMPUS  
Tuesday 25 November**

Access Studies, Art & Design, Early Years /Childcare, Foundation Studies, Health & Social Care, Sport.

**LES OZOUETS CAMPUS  
Wednesday 26 November**

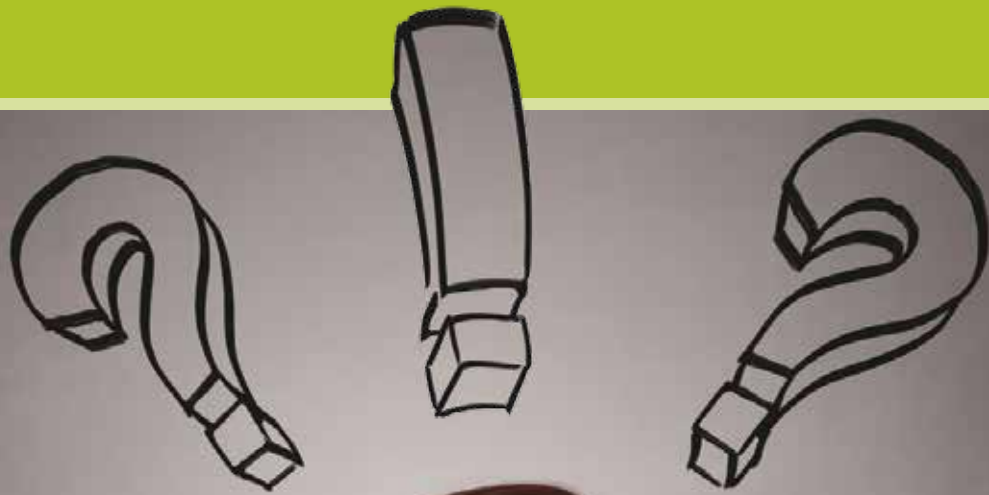
Business, Management & Finance Office Administration, Built Environment Hairdressing & Beauty Therapy Performing Arts, Flexi IT Learning

**COUTANCHEZ CAMPUS  
Thursday 27 November**

Construction, Carpentry & Joinery Electro-technical Studies, Plumbing Trowel Trades, Engineering Mechanical Engineering, Welding & Fabrication, Manufacturing Engineering Motor Vehicle, Hospitality & Catering, IT Studies.

**If you have not quite seen what you are looking for, please call us anyway, we will aim to provide you with advice, information and guidance on courses to meet your needs –TELEPHONE: 737500**





# Frequently Asked Questions!?

## How do I enrol for a course?

Please complete the application form which can be found in the middle of this Prospectus and send it with your payment to: Adult Education, PO Box 578, St Peter Port, Guernsey, GY1 6LG, or place it in the College of Further Education's letter-box. Forms may also be faxed to 746720. Photocopies of the application form are accepted. You can also download an application form from the Guernsey College of Further Education's Website: [www.guernseycollege.ac.gg](http://www.guernseycollege.ac.gg). The Prospectus is available from 16th August to enable early booking. Please note the College is closed for Summer vacation during this period and no enquiries can be taken until **Tuesday 26th August 2014**.

## Can I book early for a course?

Adult Education re-opens on **Tuesday 26th August 2014** for all course enquiries.

You may enrol for a course by post prior to this date by sending in your completed form and payment to the PO Box number, sending the enrolment form by fax to 746720, email to [adulted@gcfe.net](mailto:adulted@gcfe.net), or calling in person at the college.

All early applications will be processed on a daily basis according to the date received at the College, following on

from this it is a question of chance as to the order in which each enrolment is opened.

## How do I pay?

Cheques should be made payable to the 'States of Guernsey'. **If you are applying for more than one course please enclose separate cheques for each course.** This will enable us to return fees for courses that are already full and still process other applications without delay.

Alternatively you may pay by Visa, MasterCard, Maestro or Switch (**for switch cards, please ensure you have either the issue number, or commencing date**) by completing the required details on the enrolment form.

## Can I pay the course fee by instalments or by post-dated cheque?

Unfortunately, no. You will not have your application confirmed until payment is received in full. Remember, payment can be made with a credit card or debit card, cheque, postal order or cash.

## Why are some courses more expensive?

It depends on the duration of the course and some additional fees contribute towards the cost of demonstration materials, handouts, artist models or exams, and this is

reflected in the course fee. Books and equipment, e.g. flowers or cooking ingredients, may need to be purchased on some courses.

### Am I entitled to a fee concession?

If by the date of commencement of the course you are aged 65 or over you may be entitled to pay a reduced fee.

If you are registered with the Social Security Department as unemployed or receiving sickness benefit you are entitled to a reduced fee. Please fill in the application form and complete the appropriate fee concession box. In cases of extreme financial hardship please contact the Adult Education office on 737585.

### How do I obtain more details about the course?

Our descriptions are fairly comprehensive, but if you have any queries at all please telephone us on **737585 after Tuesday August 26th** and we will do our best to help you. Prior to this date enquires cannot be taken.

### Telephone enquiries

We receive hundreds of calls and we would therefore request your patience if you have to leave a message. All calls are returned. Course descriptions are available in the brochure and our administrative staff may be unable answer questions regarding course content beyond the description given. In some cases tutors have given contact numbers.

### Where do I send my completed application form?

Completed application forms may be sent to PO Box 578, St Peter Port, Guernsey, GY1 6LG, or faxed to 746720, emailed to [adulted@gcfe.net](mailto:adulted@gcfe.net), or handed into the College of Further Education. PLEASE NOTE THAT PARKING MAY BE RESTRICTED AT CERTAIN TIMES IN THE COLLEGE CAR PARK DUE TO THE NUMBER OF STUDENTS ATTENDING.

### What happens if the course I want is full?

Our policy is to accept applications on a first come, first served basis on receipt of fees. However, if a course is full a person's name will automatically be placed on a waiting list. If the waiting list is sufficiently large and additional tutors and facilities are available, another course may be arranged. All those on the waiting list will be contacted by letter or telephone with the details. The first come, first served rule also applies here.

Should a place become available on a new course, the first person on the waiting list is telephoned and offered the place. Only one call will be made to each person on the list. If that person cannot be contacted, the next person is contacted. If you are offered a place, you may register over the telephone using your credit or debit card. Alternatively, we will hold the place for one working day to enable

you to register and pay in person. However, after the hold period expires, the first come, first served rule applies and the place may be offered to the next person on the list.

If the course you wish to enrol on is full then a refund will be sent to you.

### What if my course is relocated, rescheduled or cancelled?

We make every effort to avoid doing this, but occasionally it is necessary. This is why it is vitally important for us to have your current telephone numbers in order that we can contact you as speedily as possible. If the new time slot or venue is not acceptable to you, a full refund will be issued.

### Why are some courses cancelled?

A minimum enrolment number is required to recover the full costs of providing the course. If the numbers of students fail to reach this minimum, we reluctantly cancel the course. We contact the applicants and provide a full refund, or offer a transfer to another course, if a suitable one is available.

### Cancellation or curtailment of sessions of courses that have already started.

**If a session of a course has to be cancelled or curtailed due to circumstances beyond our control, it may not be possible to re-schedule the session or sessions due to time constraints or unavailability**

**of suitable premises. No refund of course fees will be made unless it is deemed that as a result of the reduction in the number of course sessions, course members will be disadvantaged.**

### Please Note:

The details contained in this Prospectus are the latest available at the time of going to print and may subsequently require to be altered. Whilst every care has been taken to ensure accuracy, in no circumstances will The Adult Education Office at the College of Further Education be liable for any error or omission. Any persons who will be affected by any subsequent changes that have to be made will be notified accordingly.

### Can You Teach Us A Lesson?

If you have a skill or a keen interest in a subject that could be included in the programme, we would be pleased to hear from you. A teaching qualification is desirable, but not essential, as we can provide an opportunity to undertake training leading to the City and Guilds Level 3 Award in Education and Training. If you wish to progress further, it may be possible for you to continue your teacher training at a higher level.

**Please contact the Adult Education Office, tel:737585, for an informal discussion.**

**For full details on the teaching qualifications, please contact Martine Ellis on [martinee@gcfe.net](mailto:martinee@gcfe.net) or 749940.**

## Examination Entries

Participants undertaking award-bearing courses such as A levels and GCSEs are personally responsible for their own examination entry and fee. Examination fees vary so it is advisable to check on entry.

**Contact:** The Examinations Officer, College of Further Education, Route des Coutanchez, St Peter Port. GY1 2TT. Tel: Examination Section: 737500 ext. 832 or 611.

**Useful Websites:** [www.ocr.org.uk](http://www.ocr.org.uk)  
[www.aqa.org.uk](http://www.aqa.org.uk)

## Important Information for all Candidates

Achieving a GCSE or A Level qualification through an evening course is not an easy task and will necessitate study and work at home. All courses are designed to cover the syllabus in 30 weeks.

Details of essential text books to be purchased can be obtained from the tutor on the first evening of the course.

Syllabuses for the above examinations may be downloaded from the internet. For AQA examination board, log on to: [www.aqa.org.uk](http://www.aqa.org.uk). For OCR examination board, log on to [www.ocr.org.uk](http://www.ocr.org.uk). Internet facilities are available in the College library, or contact the Examinations Officer on 737500 Ext 832 or 611 for further information.

## Library and Learning Resources Centre

You are welcome to use the college library to browse or borrow items as a member of the public. There is a large selection of excellent fiction and non-fiction books, books relating to your course, DVDs and plenty

of interesting magazines and newspapers too. The College library resources can also be searched using the Guille-Alles online catalogue at [www.library.gg](http://www.library.gg).

You can also use the library as a quiet study space and make use of the photocopiers. Computer access logins are available on request, although a few days' notice is required. There is a library at all three College campuses, just ask at Reception for directions. The libraries' opening hours are currently as detailed below but may be subject to change over the coming months.

The library staff would be more than happy to help with any further questions. Please email [librarystaff@gcfe.net](mailto:librarystaff@gcfe.net) or ring us on 737500.



## The New Adult Education Classrooms

For those of you who are going to attend Adult Education daytime courses and certain evening classes, two spacious and well-lit classrooms are situated in Guernsey College of Further Education's refurbished premises at **Les Ozouets Campus, St Peter Port. Les Ozouets Campus is the former St Peter Port Secondary School, situated in Les Ozouets Road, St Peter Port. (See map below.)**

The rooms were used for the first time last year and were generally well-received as being extremely suitable for the classes that took place there.

The Adult Education Classrooms are situated at the rear of the building and can be accessed via the Main Entrance and then turn right at the end of the corridor. There is a car park at the front of the building and additional parking spaces are available next to the Princess Royal Centre for Performing Arts. For those of you who need to carry bulky items, trollies will be available to assist you with transporting them from your car to the Adult Education Classrooms.





# Evening Classes in English and Mathematics at the College of FE

**Please note:** All courses are subject to securing sufficient enrolments

IGCSE English	
<b>Functional Skills English levels 1 and 2 Preparation for GCSE</b> This course is run at a workshop where individuals work at their own pace with support from the tutors.	Wednesdays 6.30 -8.30pm College of Further Education (Les Ozouets Campus) <b>Contact:</b> Phil Emberton <b>Email:</b> phile@gcfe.net
IGCSE Mathematics	
<b>Functional Skills Mathematics levels 1 and 2 Preparation for GCSE</b> This course is run at a workshop where individuals work at their own pace with support from the tutors.	Thursday 6.30-8.30pm College Of Further Education (Les Ozouets Campus) <b>Contact:</b> Nicola Le Feuvre <b>Email:</b> nicolal@gcfe.net
IGCSE Basic Skills	
<b>Basic Skills</b> This course is run at a workshop where individuals work at their own pace with support from the tutors.	Please contact Nicola Le Feuvre for further details <b>Email:</b> nicolal@gcfe.net

**For more information, advice and guidance about accessing English, Mathematics or Basic Skills at College, please attend the enrolment evening College of Further Education Les Ozouets Campus on Thursday 28th August 2014 from 6pm.**

**These courses are for ESOL students for whom English is not their native language and who would like to study or continue their studies in the English language.**

**The courses are available at a number of levels and range from Beginners to Advanced, subject to demand.**

Before enrolling on a course, you will need to be assessed in order to determine which class is appropriate for you. The assessment interview will be done by one of our tutors and will last approximately forty-five minutes.

Once you have been assessed, you can enrol on the appropriate course by completing an enrolment form which is available at the College. You will be told the time and day of the course when you have enrolled. All courses run subject to sufficient demand

**There is no need to book, please come along on:**

**Date:** Monday 8th September

**Time:** Any time from 6.00pm - 8.00pm.

**Place:** The College of Further Education, Route des Coutanchez, St Peter Port GY1 2TT

If you are unable to attend on the above-mentioned date, please phone Eileen Havard on 07781 138241 so that an assessment interview can be arranged for you on the next available assessment session.

It is normally possible to join a course after its start date if there is a place available on the course and with the agreement of the course tutor.

**Cost:** £75 per term of approximately 10 weeks for autumn and spring terms. The summer term may be shorter and is subject to sufficient numbers of people enrolling on the course. Courses with fewer numbers of students may cost more. Some tutors may ask you to buy a course book.

The cost of this is around £30 and is not part of the course fee. For those wishing to take examinations at the end of the course, an examination fee will be payable.

## FOR INFORMATION:

Eileen Havard on  
07781 138241

**The Guernsey College of Further Education is pleased to announce its continued partnership with Gresham College, London's oldest institute of higher education.**



Gresham College exists for the sole purpose of providing free public lectures on a diverse range of topics, which it has done since it was founded in 1597. The College was conceived by Sir Thomas Gresham as a means of educating those working and living in the City of London, but the digital age has allowed for his mission to find a new, global reach via the internet.

The Gresham College website ([www.gresham.ac.uk](http://www.gresham.ac.uk)) currently boasts a collection of over 1,500 lectures, available to read, watch and download. The lectures are also available through the mobile app (available for both iOS and Android devices) as podcasts through iTunes.

At the heart of Gresham College's yearly programme of 150 lectures are the nine Gresham Professors of Astronomy, Commerce, Divinity, Environment, Geometry, Law, Music, Physic and Rhetoric. Each Professor delivers an annual series of six lectures, usually on a given theme.

Recent series have included 'Music in Context', 'The Royal Palaces of England' and 'Fashion and Visual Culture in the 19th Century.' Additional lectures are given by Visiting Professors and eminent one-off speakers, covering topics as varied as the history of tattoos, the psychology of comedy and the use of cannabis in Victorian Britain. Distinguished recent lecturers have included The Rt Hon John Bercow MP, Lord Denis Healey and Andrew Motion, all of whose lectures can be freely accessed online.

To receive regular updates from the College, please visit the website to join the mailing list, call 020 7831 0575 or email [enquiries@gresham.ac.uk](mailto:enquiries@gresham.ac.uk). You can also subscribe to the Gresham College YouTube, Facebook and Twitter pages.

Examples of the lectures that are freely available for you to watch on the Gresham College website include:



- **Echoes of the Big Bang**  
Professor Carolin Crawford
- **Butterflies, Chaos and Fractals**  
Professor Raymond Flood
- **Was Karl Marx always wrong?**  
Professor Douglas McWilliams
- **Saving Havens: Off Shore, Onshore, Midshore: International Financial Centres**
- **Palaces from the Hundred Years' War to the Wars of the Roses**  
Dr Simon Thurley
- **The Growth of Euroscepticism**  
Professor Vernon Bogdanor
- **The Black Death**  
Professor Sir Richard Evans FBA
- **Religious Identity and Freedom of Expression** – Professor The Lord Plant
- **Burma and North Korea: Avoid the Law unless Convenient**  
Professor Sir Geoffrey Nice QC
- **Vision and the Artist**  
Professor William Ayliffe
- **The Mathematics of Computer Dating**  
Professor Tony Mann
- **Music in Advertising: Ravel and Saint-Saëns** – Professor Christopher Hogwood CBE, with musicians from the Royal Academy of Music
- **What did eighteenth-century men want?**  
Professor Amanda Vickery
- **Parliament and the Public: Strangers or Friends?** – The Rt Hon John Bercow MP
- **How tall can the European Convention on Human Rights grow?** – The Rt Hon the Baroness Hale DBE
- **Resetting the Human Compass: The Use and Value of the Arts** – Andrew Motion

Gresham College is based in Barnard's Inn Hall, a former Inn of Chancery off Holborn, London. The College invites the people of Guernsey to attend any of its lectures in person: all events are entirely free, though some may require advance booking. Please check the College website for further information and to request a programme of events.

Gresham College is an independent institution, governed by a Council and with the Lord Mayor of London as its President. The College gratefully receives support from the City of London Corporation and the Mercers' Company.



**"My Tutor made both courses all things, Educational, Interesting and Very enjoyable due to his personal input."**

<b>Class No</b>	301
<b>No. of weeks</b>	31
<b>Day</b>	Wednesday
<b>Time</b>	18:00-20:00
<b>Tutor</b>	Anne Setters
<b>Cost</b>	£ 240.00
<b>Location</b>	Les Ozouets Campus
<b>Commence</b>	24/09/2014

### GCSE Business and Communication Systems

This one-year AQA GCSE course should appeal to students aiming to work in administration. The programme of study will include: theory - health and safety in the workplace, business communication, creating business documents, advertising for staff, recruitment, training, business objectives, job roles and workplace organisation; software - word processing, databases, spreadsheets and graphics. This subject is suitable for anyone wishing to learn about how ICT helps a business to communicate. It is suitable for anyone wanting to return to academic study at this level. At the end of the course there will be a controlled assessment and two final examinations.

<b>Class No</b>	302
<b>No. of weeks</b>	30
<b>Day</b>	Tuesday
<b>Time</b>	18:00-20:00
<b>Tutor</b>	Chris Heath-Taylor
<b>Cost</b>	£ 240.00
<b>Location</b>	Les Ozouets Campus
<b>Commence</b>	23/09/2014

### AS Psychology

A one-year course leading to AS or A level Psychology.

#### The course texts will be:

The Complete Companions: AS Student Book for AQA A Psychology (Third Edition)

<b>Class No</b>	303
<b>No. of weeks</b>	30
<b>Day</b>	Monday
<b>Time</b>	18:00-20:00
<b>Tutor</b>	Chris Heath-Taylor
<b>Cost</b>	£ 240.00
<b>Location</b>	Les Ozouets Campus
<b>Commence</b>	22/09/2014

### A2 Psychology

For those who have successfully completed AS Psychology. Depending on the size of the group, the course may be run on a tutorial basis. For further information, please call Adult Education on 737585.



## AS Level Film Studies

<b>Class No</b>	304
<b>No. of weeks</b>	30
<b>Day</b>	Monday
<b>Time</b>	18:30-20:30
<b>Tutor</b>	Edward Gregson
<b>Cost</b>	£ 240.00
<b>Location</b>	Grammar School
<b>Commence</b>	22/09/2014

**NEW**

The first year of the Film Studies A level course includes the opportunity of entering an AS exam in May/June 2015.

We will cover approaches to film texts including narrative, genre and representation. We will also explore micro features of film production, (cinematography editing, performance, mise-en-scene and sound) and analyse how they construct meaning and emotional impact for an audience.

We will study British and American Cinema (an examined unit for those wishing to take the AS exam) which explores the differences between Hollywood and the British Film industry. We will explore the institutional contexts they work within, including production, marketing, distribution and exhibition. Also within this unit we complete a close study of two British films and consider what makes them distinctively British. Finally we compare two American films made in different historical periods and explore the changing social, political and cultural impact with the texts.

**"It stretches my mind, the tutor encourages my creative work and it's a real pleasure to participate with others on the course. Put simply I have really enjoyed the course."**



**Class No** 311  
**No. of weeks** 16  
**Day** Monday  
**Time** 19:30-21:00  
**Tutor** Rachel Lucas  
**Cost** £120.00 Overs 65yrs £100.00  
**Location** Grammar School  
**Commence** 22/09/2014

**French - Complete Beginners**

This introductory class is for those students with a very little knowledge or experience of French. The course will focus on the key skills of listening and speaking. The textbook used will be 'Facon de Parler 1: Coursework for Beginners' ISBN 9781444168389.

**Class No** 312  
**No. of weeks** 16  
**Day** Wednesday  
**Time** 19:30-21:00  
**Tutor** Rachel Lucas  
**Cost** £120.00 Overs 65yrs £100.00  
**Location** Grammar School  
**Commence** 24/09/2014

**French - Complete Beginners**

Repeat course. See description above.

**Class No** 313  
**No. of weeks** 16  
**Day** Tuesday  
**Time** 19:00-21:00  
**Tutor** Rodolphe Jaget  
**Cost** £120.00 Overs 65yrs £100.00  
**Location** Grammar School  
**Commence** 23/09/2014

**French Conversation Intermediate Level 1**

For people who already have the basics of the language and who would like to use the language in simple situations, in role plays etc. We will aim to broaden their vocabulary base and we will strengthen their grammar. The emphasis will be on enjoying speaking the language.

**Class No** 314  
**No. of weeks** 16  
**Day** Tuesday  
**Time** 19:00-21:00  
**Tutor** Ghislaine Bougourd  
**Cost** £120.00 Overs 65yrs £100.00  
**Location** St Sampson's High School  
**Commence** 23/09/2014

**French Conversation Intermediate Level 2**

For everyday conversation.

This course is for students who are already able to make themselves understood in a holiday situation, and now wish to expand their knowledge to be able to hold a general conversation whilst still doing some revision of grammar.

**"The tutor was very patient with any questions the class asked. Most enjoyable."**

**Spanish Beginners**

Introductory course for beginners or for those who have very little, or no knowledge of the language.

**Class No** 315  
**No. of weeks** 16  
**Day** Tuesday  
**Time** 19:15-21:00  
**Tutor** Rose Sauvage  
**Cost** £120.00 Overs 65yrs £100.00  
**Location** Les Beaucamps High School  
**Commence** 23/09/2014

**Spanish Beginners**

Introductory course for beginners or those who have very little, or no knowledge of the language. The course textbook will be 'SUENOS World Spanish 1' new edition ISBN 0-563-47246-4 cost £14.99

**Class No** 316  
**No. of weeks** 16  
**Day** Monday  
**Time** 18:30-20:30  
**Tutor** Leonardo Paucar  
**Cost** £120.00 Overs 65yrs £100.00  
**Location** Grammar School  
**Commence** 29/09/2014

**Spanish Elementary and Conversation**

This course is aimed at advanced beginners, independent users, or those with GCSE experience, and who are aware of present, past and future tenses in the Spanish language.

**Class No** 317  
**No. of weeks** 16  
**Day** Tuesday  
**Time** 18:30-20:30  
**Tutor** Leonardo Paucar  
**Cost** £120.00 Overs 65yrs £100.00  
**Location** Grammar School  
**Commence** 07/10/2014

The course textbook is Bitacora: Libro 1 Student Book (Libro del Alumno) ISBN 9788484437468 approx £19.

**Guernsey French Beginners**

An introductory course in Guernsey French.

**Class No** 318  
**No. of weeks** 18  
**Day** Tuesday  
**Time** 19:30-21:00  
**Tutor** Harry Tomlinson  
**Cost** £120.00 Overs 65yrs £100.00  
**Location** Grammar School  
**Commence** 30/09/2014

**Russian Language and Culture**

Learn basic Russian language and discover about Russian culture, including climate, humour, films, music and food. Taught by an experienced language teacher and a native Russian speaker born and brought up in Moscow.

**NEW**  
**Class No** 319  
**No. of weeks** 16  
**Day** Wednesday  
**Time** 18:30-20:30  
**Tutor** Tatiana Kincaid  
**Cost** £120.00 Overs 65yrs £100.00  
**Location** Grammar School  
**Commence** 24/09/2014



# Community Theatre is going to happen!!

**Community Theatre can be used in many settings including health, education, restorative justice, older people, and reminiscence arts.**

This course will give participants the opportunity to better understand the concepts and benefits of Community Theatre as well as develop their performance skills.

**Topics covered will include:**

- What is community theatre?
- Understanding the needs of audiences
- Devising to a brief
- Adapting to different performance spaces

- Developing performance skills
- Designing and delivering workshops

Participants should already have training or experience in performing and will be expected to participate in community performances.

**To register your interest in this new and exciting project, please contact the Adult Education office on telephone: 737585 or email [adulted@gcfe.net](mailto:adulted@gcfe.net)**

**Classical Guitar**

This is generally intended to be an improver's course where some previous knowledge of playing or reading would be helpful. The course will look at simple ensemble pieces for duo, trio or quartet including correct use of left and right hands, sitting positions etc. A nylon strung Classical/ Spanish guitar will be needed. John is a renowned professional guitarist.

331	<b>Class No</b>
16	<b>No. of weeks</b>
Monday	<b>Day</b>
19:00-20:30	<b>Time</b>
John Byrne	<b>Tutor</b>
£120.00 - £100.00	<b>Cost</b>
Grammar School	<b>Location</b>
22/09/2014	<b>Commence</b>

**Beginners' 5-string Bluegrass Banjo**

For absolute beginners interested in learning Scruggs style picking on the 5 string. The course will start with an introduction to Tablature (tab), and tab will be used throughout the course to build a collection of folk tunes, as well as licks and basic techniques to get you started picking. Participants will need a 5-string resonator bluegrass banjo and a set of 3 banjo picks (1 thumb and 2 finger picks). They will also need to buy the textbook: 'You Can Teach Yourself Banjo' by Janet Davis.

332	<b>Class No</b>
16	<b>No. of weeks</b>
Tuesday	<b>Day</b>
19:00-20:30	<b>Time</b>
Melody Hewlett	<b>Tutor</b>
£120.00 - £100.00	<b>Cost</b>
St Sampson's High School	<b>Location</b>
23/09/2014	<b>Commence</b>

Please feel free to contact Melody (melalderney@cwgsy.net or 07781 415042) for advice as to which banjo is the correct one for this course. This will be a repeat of last year's course.

**Carry on Singing**

A course for those who have completed the Singing for the Terrified course and are not so terrified anymore!

An opportunity to further develop your singing skills and repertoire. Classes will run in a similar way to the 'Terrified' class but with more challenging songs and further work on split parts and harmonies.

Emphasis, as always, on singing from the heart and for the soul!

333	<b>Class No</b>
16	<b>No. of weeks</b>
Wednesday	<b>Day</b>
18:30-19:30	<b>Time</b>
Kate Kellaway	<b>Tutor</b>
£72.00 - £67.00	<b>Cost</b>
Performing Arts Centre, Les Ozouets	<b>Location</b>
24/09/2014	<b>Commence</b>

**"In my opinion both the content, delivery and approachability of these sessions and especially the tutor were outstanding. I would not hesitate to enrol again with this tutor."**

**Class No** 334  
**No. of weeks** 29  
**Day** Monday  
**Time** 19:00-21:00  
**Tutor** Nerine Ozanne  
**Cost** £0.00  
**Location** St Sampson's High School  
**Commence** 15/09/2014

**Guernsey Glee Singers**

The Glee Singers is a mixed choir made up of people who enjoy singing the widest variety of music, ranging from part songs to show songs and from Brahms to the Beatles. We have two concerts a year, one at Christmas and one in the spring or early summer. These are fundraising events and we support various local charities.

Expert music reading skills are not necessary though enthusiasm, commitment and pleasure in good quality choral music making are essential. Male voices are especially welcome.

Those interested in choir membership or needing further information are invited to contact the Choir Secretary, Jen Spencer, telephone 726525 or email [jen\\_rs@hotmail.com](mailto:jen_rs@hotmail.com). You will be asked to sing to our Musical Director in order that your exact vocal range can be determined.

**Class No** 335  
**No. of weeks** 6  
**Day** Tuesday  
**Time** 19:30-21:30  
**Tutor** -  
**Cost** £0.00  
**Location** Various Centres  
**Commence** 09/09/2014

**Guernsey Choral and Orchestral Society Orchestra**

The GCOS orchestra comprises advanced and experienced players who meet for rehearsals just prior to the Society concerts.

The orchestra accompanies the choir in large choral works and also plays a variety of orchestral music at the concerts.

**If you are interested, please email [alanguough@cwgsy.net](mailto:alanguough@cwgsy.net) or contact the Chairman Barbara Minta on 247606 or [bminta@cwgsy.net](mailto:bminta@cwgsy.net)**

**"The GCOS is a very friendly, community choir and orchestra; the experience of singing with a large number of people is very uplifting and exhilarating; we work hard but the end result is a concert of a very high standard of music making"**

**Guernsey Choral and Orchestral Society Choir**

About 100 voices each week meet together to sing a range of repertoire including classical and modern choral works, opera choruses and carols at Christmas, accompanied by full orchestra. Preparation for the two Christmas Concerts on the 19th & 20th December and the annual concert in May, 2015, will begin on 9th September.

GCOS has a new conductor starting in September 2014. Alan Gough, who was the Society's MD for 18 years, returns to take up the baton and he is keen to welcome new singers to come along and enjoy this popular choral tradition.

Membership is subject to a short voice test after a trial period of rehearsals. The ability to read and understand basic music notation will help any newcomers to enjoy this music-making experience to the full.

**Further details can be found on our website [www.guernsey\\_choral.org](http://www.guernsey_choral.org)**

**Class No** 336  
**No. of weeks** 29  
**Day** Tuesday  
**Time** 19:30-21:30  
**Tutor** Alan Gough  
**Cost** £0.00  
**Location** St Sampson's High School  
**Commence** 09/09/2014

**If you are interested in joining the choir, please email [alanguough@cwgsy.net](mailto:alanguough@cwgsy.net) or contact the Chairman Barbara Minta on 247606 or [bminta@cwgsy.net](mailto:bminta@cwgsy.net)**



**Class No** 351  
**No. of weeks** 16  
**Day** Tuesday  
**Time** 19:00-21:00  
**Tutor** Rob Sweeney  
**Cost** £120.00 Overs 65yrs £100.00  
**Location** Les Beaucamps High School  
**Commence** 23/09/2014

**Watercolours for Beginners**

This course covers the basics of watercolour painting giving the student the confidence to tackle any subject matter.

**Class No** 352  
**No. of weeks** 16  
**Day** Wednesday  
**Time** 19:00-21:00  
**Tutor** Rob Sweeney  
**Cost** £120.00 Overs 65yrs £100.00  
**Location** Les Beaucamps High School  
**Commence** 24/09/2014

**Mixed Media Extravaganza**

This course introduces students to various painting, drawing and some 3D media including charcoal, graphite, pastel, acrylic, watercolour, oils, clay, pen and ink and clay. Please bring with you any materials that you have at home.

**Class No** 353  
**No. of weeks** 16  
**Day** Monday  
**Time** 19:00-21:00  
**Tutor** Frances Lemmon  
**Cost** £120.00 Overs 65yrs £100.00  
**Location** Les Beaucamps High School  
**Commence** 22/09/2014

**Fun with Painting and Drawing**

Suitable for absolute beginners and those with more experience. Looking at still life, life and landscape drawing using charcoal, pencil, pastel, sanguine, graphite, pen and wash, acrylic and oil.

We will gradually develop core drawing and painting skills by looking at a broad variety of techniques, materials and styles.

Please bring any materials you have at home.

**Class No** 354  
**No. of weeks** 16  
**Day** Tuesday  
**Time** 18:30-21:00  
**Tutor** Julie Embling  
**Cost** £170.00 Overs 65yrs £155.00  
**Location** Les Beaucamps High School  
**Commence** 23/09/2014

**Pottery - Beginners and Returners**

Students will learn handbuilding skills producing lots of pieces in different types of clay leading onto making ceramics of your own choice. There will be an opportunity to use a pottery wheel. The course will also provide returners with the opportunity to create personal pieces using a variety of methods and clays, and experiment with glazes and glazing techniques.

All materials and tools provided



**The Guernsey Adult Literacy Project was created five years ago in response to growing concerns about literacy levels in the adult population.**

GALP now employs four trained teachers who work with adults of all ages helping them to improve their literacy skills. The charity helps approximately one hundred learners every year. Some may only need three or four sessions to help them improve; others may attend for several weeks or months. Some come along because they want to improve their work prospects; others may want to help their children or grandchildren.

GALP is based at the Skills Centre at Waitrose in Admiral Park but also works in partnership with other organisations including the Careers Service, Action For Children and the Library Service, all of whom have centres around the island where GALP staff are able to meet their students.

The project also works with the Home Department, providing literacy training in the Prison, and with the Probation Service.

GALP is also able to work with employers, providing literacy training in the workplace.

The Guernsey Adult Literacy Project is a charity which funds its activities from donations and sponsorship. GALP also organises a range of fund-raising events in order to support its work.

Over the past two years the Donkey Parade and the Cow Parade have proved to be extremely popular with both locals and visitors, and raised significant funds for the charity. This summer GALP is planning a different fund-raiser, details of which will be released later.

**If you are aware of anyone who could benefit from GALP, please call Janet Wakefield on 07781 402748**

**Class No** 355  
**No. of weeks** 8  
**Day** Thursday  
**Time** 19:00 - 21:00  
**Tutor** Catherine Stuart  
**Cost** £65.00 Overs 65yrs £60.00  
**Location** Grammar School  
**Commence** 25/09/2014

**'And Sew On'**

A sewing course designed for complete beginners. Students will begin with basic skills and projects allowing individual designs as far as possible. This beginners' course will include simple sewing projects suitable for beginners including basic cushions, applique, basic bags, door stops, placemats and room tidies. Ideal for all budding Cath Kidstons! Students will require their own sewing machine, scissors, thread and fabrics. Advice will be given.

**Class No** 356  
**No. of weeks** 8  
**Day** Thursday  
**Time** 19:00-21:00  
**Tutor** Catherine Stuart  
**Cost** £65.00 Overs 65yrs £60.00  
**Location** Grammar School  
**Commence** 22/01/2015

**Here We Sew Again!**

A follow-on course from 'And Sew On' for those who either wish to develop their skills further or who would like to take on more advanced projects. Students can use this course as a workshop bringing their own choice of projects along or they can follow set projects prepared by the tutor eg slippers, handbag, Roman blinds, floor cushion, cases, etc. Students will require their own basic sewing machine, scissors, thread and fabrics.

**Class No** 357  
**No. of weeks** 16  
**Day** Tuesday  
**Time** 19:00-21:00  
**Tutor** Jane Seymour  
**Cost** £125.00 Overs 65yrs £115.00  
**Location** Les Ozouets Campus  
**Commence** 23/09/2014

**Soft Furnishings**

A workshop course concerned with the re-upholstery of small seats which can be taken to the class (no storage available) whether foam, stuffed hair or sprung, and the recaning or reseating of cane and rush chairs. Lampshades may also be re-covered in fabric.

**Class No** 358  
**No. of weeks** 8  
**Day** Wednesday  
**Time** 19:00-21:00  
**Tutor** Eleanor de Kooker  
**Cost** £80.00 Overs 65yrs £75.00  
**Location** St Sampson's High School  
**Commence** 24/09/2014

**Sewing and Alterations**

After watching the "Sewing Bee" you may realise that there are so many ways to change a garment to suit your likes. Your clothes may need to be let out or taken in as your shape changes.

This class will enable the participant to alter clothes. It will include hems, zips, lift shoulders, cuffs, take in, and let out. Participants will need to bring a sewing machine, needles and scissors. You may also re-cycle fabrics to make lovely Christmas gifts.

**Sewing and Alterations**

After watching the "Sewing Bee" you may realise that there are so many ways to change a garment to suit your likes. Your clothes may need to be let out or taken in as your shape changes.

This class will enable the participant to alter clothes. It will include hems, zips, lift shoulders, cuffs, take in, and let out. Participants will need to bring a sewing machine, needles and scissors. You may also re-cycle fabrics to make lovely Christmas gifts.

**Class No** 359  
**No. of weeks** 8  
**Day** Wednesday  
**Time** 19:00-21:00  
**Tutor** Eleanor de Kooker  
**Cost** £80.00 Overs 65yrs £75.00  
**Location** St Sampson's High School  
**Commence** 21/01/2015

**Bags and Cushions**

To design and make your own cushions and bags is a great achievement. Students may use their own recycled fabrics or buy their own. Different designs and textures can be made up to look spectacular.

**NEW** **Class No** 360  
**No. of weeks** 8  
**Day** Monday  
**Time** 19:00-21:00  
**Tutor** Eleanor de Kooker  
**Cost** £80.00 Overs 65yrs £75.00  
**Location** St Sampson's High School  
**Commence** 22/09/2014

**Bags and Cushions**

Repeat course. See description above.

**NEW** **Class No** 361  
**No. of weeks** 8  
**Day** Monday  
**Time** 19:00-21:00  
**Tutor** Eleanor de Kooker  
**Cost** £80.00 Overs 65yrs £75.00  
**Location** St Sampson's High School  
**Commence** 19/01/2015

**Crochet - Soft Toys for Beginners**

Wish to learn a new skill? Then this course is for you. Set for beginners, the aim is to learn to crochet and to be able to create a cuddly soft toy. Advice on what to purchase will be given at the first lesson.

**NEW** **Class No** 362  
**No. of weeks** 8  
**Day** Wednesday  
**Time** 19:00-21:00  
**Tutor** Andra Le Bideau  
**Cost** £80.00 Overs 65yrs £75.00  
**Location** Grammar School  
**Commence** 01/10/2014

**"Our tutor is a fantastic, warm enthusiastic teacher."**



**Class No** 363  
**No. of weeks** 16  
**Day** Tuesday  
**Time** 18:00 Overs 65yrs 20:45  
**Tutor** Tony Yabsley  
**Cost** £200.00 Overs 65yrs £180.00  
**Location** Les Beaucamps High School  
**Commence** 23/09/2014

**Silversmithing and Jewellery Making Beginners**

Designed for complete beginners or those with little experience of the craft. Students will start with basic projects and techniques allowing individual designs as far as possible. Students will be making individual pieces from metal, using hand tools and some machinery in the craft workshop. Materials may be purchased via the course tutor. The price of certain materials may vary according to the time they are purchased. (Bead stringing is not taught on this course.)

**Class No** 364  
**No. of weeks** 16  
**Day** Monday  
**Time** 18:00 -20:45  
**Tutor** Tony Yabsley  
**Cost** £200.00 Overs 65yrs £180.00  
**Location** Les Beaucamps High School  
**Commence** 22/09/2014

**Silversmithing and Jewellery Making Intermediate**

Designed for those who have experience of the craft. Students will be making individual pieces using traditional materials and techniques, using hand tools and some machinery in the craft workshop. Materials may be purchased via the course tutor. The price of certain materials may vary according to the time when they are purchased.

**Class No** 365  
**No. of weeks** 16  
**Day** Monday  
**Time** 18:00 - 21:00  
**Tutor** David Hill  
**Cost** £200.00 Overs 65yrs £180.00  
**Location** Les Beaucamps High School  
**Commence** 22/09/2014

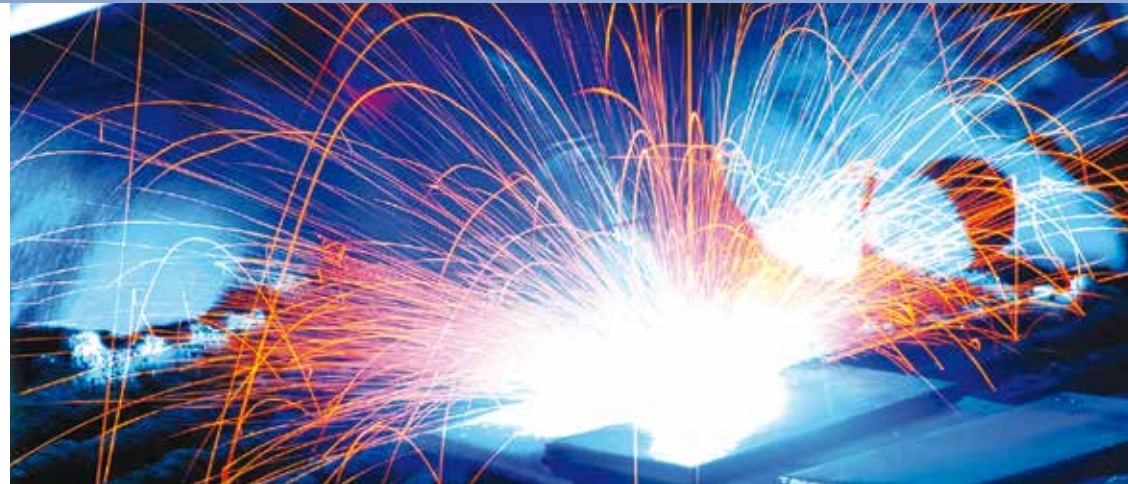
**Woodwork**

A general woodworking class for beginners and more advanced practitioners. The course is a workshop where participants work on their own projects. If you require further details call the tutor on 252694 after 3rd September. Students will provided their own materials.

**Class No** 366  
**No. of weeks** 16  
**Day** Tuesday  
**Time** 18:00 - 21:00  
**Tutor** Charles Jolly  
**Cost** £245.00 Overs 65yrs £220.00  
**Location** Les Beaucamps High School  
**Commence** 23/09/2014

**Furniture Restoration and Conservation**

Primarily concerned with wooden furniture, however, the programme may include some basic upholstery and recovering of furniture. Tuition can include French Polishing, repair etc. Any work will be carried out entirely at the owner's risk and storage facilities are limited. Pieces for repair or restoration should be brought on the first night. Some basic woodwork skills are essential.



**Basic Welding**

This course will provide a basic introduction to welding processes including oxyacetylene, Arc - MAGS and TAGS.

Students must wear a smock or overalls, and safety shoes/boots. The course will run according to the College of F.E.'s academic calendar.

**Class No** 367  
**No. of weeks** 16  
**Day** Wednesday  
**Time** 19:00-21:00  
**Tutor** James Frankland  
**Cost** £195.00 Overs 65yrs £180.00  
**Location** College of Further Education  
**Commence** 24/09/2014

**Working with Metal**

A practical workshop for beginners, and for those with some experience who have metalworking projects. Cost of materials not included in course fee.

**Class No** 368  
**No. of weeks** 16  
**Day** Tuesday  
**Time** 18:00-21:00  
**Tutor** Robin Powell  
**Cost** £200.00 Overs 65yrs £180.00  
**Location** College of Further Education  
**Commence** 23/09/2014

**"Over the last three years I have now attended all of this tutors courses, in reality they could not be better than by following a formal training program. A well-received course by everyone attending."**



## New Christmas Series

Let loose your creativity and make the your craftiest Christmas yet!

**Class No** 370  
**No. of weeks** 1  
**Day** Saturday  
**Time** 09:30 - 12:30  
**Tutor** Linda O'Leary  
**Cost** £35.00  
**Location** Les Ozouets Campus  
**Commence** 22/11/2014

### Christmas Crafts - Christmas Cards and Gift Tags

Let loose your creativity and make this your craftiest Christmas yet. Make your own special Christmas cards and gift tags. Make that present extra special.

**Class No** 371  
**No. of weeks** 1  
**Day** Saturday  
**Time** 09:30 - 12:30  
**Tutor** Linda O'Leary  
**Cost** £35.00  
**Location** Les Ozouets Campus  
**Commence** 29/11/2014

### Christmas Crafts - Christmas Stockings

This course will make Christmas stockings using felt and buttons. Small stockings can be made into a garland or tree decorations, or make a large gift stocking. Requires basic hand-sewing skills.

**Class No** 372  
**No. of weeks** 1  
**Day** Saturday  
**Time** 09:30 - 12:30  
**Tutor** Linda O'Leary  
**Cost** £35.00  
**Location** Les Ozouets Campus  
**Commence** 06/12/2014

### Christmas Crafts - Homemade Snowman

Make a hand-sewn Christmas Snowman (approx 10" tall) which may be a gift or a decoration.

**Class No** 373  
**No. of weeks** 1  
**Day** Saturday  
**Time** 09:30 - 12:30  
**Tutor** Linda O'Leary  
**Cost** £35.00  
**Location** Les Ozouets Campus  
**Commence** 13/12/2014

### Christmas Crafts - Crafty Bottle Covers

Make that Christmas gift extra special by making a presentation bottle cover. Hand-sewing skills required.



"The Auditorium can seat an audience of up to 300."

### The Princess Royal Centre for Performing Arts (PRCPA)

As Guernsey's first multi-functional performance space and teaching facility, the PRCPA complements the other venues across the island and provides a base for the provision of the BTEC Performing Arts Courses. The Auditorium can seat an audience of up to 300, be accessed at both ground and first floor levels and is available to be hired out for performances, conferences and workshops. The PRCPA also boasts its own black box studio rehearsal room, dance studio and teaching room which can also be hired out during the evenings and holidays for classes and meetings.

There is also a comprehensive Diary of Events including live broadcasts from the National Theatre, Royal Opera House and RSC running alongside an exciting and innovative programme of shows from our own College students and local theatre companies.

**T:** 01481 749999  
**E:** [performingarts@gcfe.net](mailto:performingarts@gcfe.net)  
**W:** [www.guernseytickets.gg](http://www.guernseytickets.gg)  
**F:** The Princess Royal Centre for the Performing Arts  
**T:** #PRCPAGuernsey





# FRIDAY MORNING COOKERY DEMO'S



with Paul Wilson

**A series of fast-paced demonstrations and tasting sessions with our multi-award winning chef/lecturer Paul Wilson.**

Learn the arts of presentation, tricks of the trade, cooking for large numbers, how to manage your time, from a family supper to a full blown dinner party in a relaxed but busy atmosphere. You will learn about the most useful cookery books, knives, equipment, utensils and plates to buy, and how to decorate and present your food.

Each customer takes home the ingredients and recipe for one dish to practice in the safety of your own home - if it goes wrong give it to the cat!

Whatever the outcome I will guarantee a fun filled 3 hours, and you will learn how to produce "Happy Food".

<b>Class No</b>	380	<b>A Selection of Asian and Thai Foods</b>
<b>Commence</b>	10/10/2014	
<b>Class No</b>	381	<b>A Selection of Canapes and Finger Foods</b>
<b>Commence</b>	07/11/2014	
<b>Class No</b>	382	<b>A Selection of Fish Dishes - How to fillet fish</b>
<b>Commence</b>	05/12/2014	
<b>Class No</b>	383	<b>A Selection of Chicken Dishes - How to butcher a whole chicken</b>
<b>Commence</b>	23/01/2015	
<b>Class No</b>	384	<b>A Selection of Beef Dishes</b>
<b>Commence</b>	13/02/2015	
<b>Class No</b>	385	<b>A Selection of Lamb Dishes</b>
<b>Commence</b>	06/03/2015	
<b>Class No</b>	386	<b>A Selection of Vegetarian Dishes</b>
<b>Commence</b>	24/04/2015	
<b>Class No</b>	387	<b>A Selection of Street Food and Family Snacks</b>
<b>Commence</b>	22/05/2015	
<b>Class No</b>	388	<b>A Selection of Seafood and Shellfish Dishes</b>
<b>Commence</b>	12/06/2015	



**£35.00**

**New Series!**

Each course takes place on Friday mornings 9.30am - 1pm





# Guernsey College of Further Education Adult Education Enrolment Form

**This form may be photocopied**

Surname:..... Home Tel:.....  
 First Name:..... Work phone:.....  
 Mr/Mrs/Ms please delete as appropriate Mobile:.....  
 Address:..... Email:.....  
 ..... Are you in full time education: (delete) YES/NO  
 .....

**Have you enrolled for an Adult Education course during the past year?: YES/NO** please delete as appropriate  
**Courses) you wish to be enrolled on:**

COURSE NUMBER	TITLE OF COURSE	FEE

**Should your desired course be oversubscribed please indicate a second choice of course here. It will be essential to do this if you are applying for a RYA Sailing course.**

Please provide the following information if a concessionary fee is being claimed:

- i) Date of birth if under 18 years of age:.....
- ii) Type and benefit number:.....
- iii) States pension number:.....

**Payment Details:**

**Cheque(s) should be made payable to 'States of Guernsey'.**

**\*For multiple course payment please send separate cheques for each desired course so that your cheque can be returned should a place be unavailable on one of your choices.**

**Office Use Only:**

ENROLMENT PROCESSED BY:	ENROLMENT DATE:	TOTAL FEES:
	TRANSACTION #:	CHEQUE NO.

**Payment: £** ..... **Total Course Fees:** .....

**Payment method:** Cheque/Credit/Debit Card    **Type of Card: (please indicate)** Visa, Mastercard, Barclaycard, Switch, Maestro

CARD NUMBER:	ISSUE DATE: (Switch Only)	SECURITY CODE <small>(last 3 digits on back of card):</small>
NAME ON CARD:	SIGNATURE:	



**Return to: Adult Education, PO Box 578, St Peter Port, Guernsey, GY1 6LG**

**Fax: (01481) 746720**

**By Hand: the College of Further Education, Routes des Coutanchez, St Peter Port**



# Guernsey College of Further Education Adult Education Enrolment Form

**This form may be photocopied**

Surname:..... Home Tel:.....  
 First Name:..... Work phone:.....  
 Mr/Mrs/Ms please delete as appropriate Mobile:.....  
 Address:..... Email:.....  
 ..... Are you in full time education: (delete) YES/NO  
 .....

**Have you enrolled for an Adult Education course during the past year?: YES/NO** please delete as appropriate  
**Courses) you wish to be enrolled on:**

COURSE NUMBER	TITLE OF COURSE	FEE

**Should your desired course be oversubscribed please indicate a second choice of course here. It will be essential to do this if you are applying for a RYA Sailing course.**

Please provide the following information if a concessionary fee is being claimed:

- i) Date of birth if under 18 years of age:.....
- ii) Type and benefit number:.....
- iii) States pension number:.....

**Payment Details:**

**Cheque(s) should be made payable to 'States of Guernsey'.**

**\*For multiple course payment please send separate cheques for each desired course so that your cheque can be returned should a place be unavailable on one of your choices.**

**Office Use Only:**

ENROLMENT PROCESSED BY:	ENROLMENT DATE:	TOTAL FEES:
	TRANSACTION #:	CHEQUE NO.

**Payment: £** ..... **Total Course Fees:** .....

**Payment method:** Cheque/Credit/Debit Card    **Type of Card: (please indicate)** Visa, Mastercard, Barclaycard, Switch, Maestro

CARD NUMBER:	ISSUE DATE: (Switch Only)	SECURITY CODE <small>(last 3 digits on back of card):</small>
NAME ON CARD:	SIGNATURE:	



**Return to: Adult Education, PO Box 578, St Peter Port, Guernsey, GY1 6LG**

**Fax: (01481) 746720**

**By Hand: the College of Further Education, Routes des Coutanchez, St Peter Port**

**Class No** 389  
**No. of weeks** 16  
**Day** Monday  
**Time** 19:00-21:00  
**Tutor** Eileen Jones  
**Cost** £128.00 Overs 65yrs £118.00  
**Location** St Sampson's High School  
**Commence** 22/09/2014

**Sugarcraft**

Suitable for participants who are beginners or those with some experience. Advice on what to purchase is available by telephoning the course tutor on 237847.

**Class No** 390  
**No. of weeks** 16  
**Day** Tuesday  
**Time** 19:00 - 21:00  
**Tutor** Eileen Jones  
**Cost** £128.00 Overs 65yrs £118.00  
**Location** St Sampson's High School  
**Commence** 23/09/2014

**Sugarcraft**

Repeat course. See description above.

**Class No** 391  
**No. of weeks** 8  
**Day** Thursday  
**Time** 19:00 - 21:00  
**Tutor** Rachel Torode  
**Cost** £143.00  
**Location** College of Further Education  
**Commence** 25/09/2014

**Cake Decorating**

A basic cake decoration course which includes cake making, a practical approach to icing and decorating (a cake is supplied). All ingredients and equipment are provided.

"Tutor was immensely patient and explained things extremely well."



**Cake Decorating**

Repeat course. See opposite page.

392 **Class No**  
 8 **No. of weeks**  
 Thursday **Day**  
 19:00 - 21:00 **Time**  
 Rachel Torode **Tutor**  
 £143.00 **Cost**  
 College of Further Education **Location**  
 22/01/2015 **Commence**

**Wine Appreciation**

This is an informative and fun course designed for men and women with all levels of wine knowledge - connoisseurs, amateurs and people in the wine trade will all get something from this course. During the 8-week course you will taste 48 different wines from different countries and experience their different characteristics and qualities.

393 **Class No**  
 8 **No. of weeks**  
 Thursday **Day**  
 19:00 - 21:00 **Time**  
 David Pipon **Tutor**  
 £138.00 **Cost**  
 College of Further Education **Location**  
 25/09/2014 **Commence**

**Wine Appreciation**

Repeat course. See description above.

394 **Class No**  
 8 **No. of weeks**  
 Thursday **Day**  
 19:00 - 21:00 **Time**  
 David Pipon **Tutor**  
 £138.00 **Cost**  
 College of Further Education **Location**  
 29/01/2015 **Commence**

**NEW**

**Barista Course** (Coffee making)

This is a basic barista training course, designed to show the art of preparing and serving excellent coffee.

Each lesson will consist of 1 hour theory and 1 hour practical. It will cover the theory of coffee, including tasting, smelling, preparing and serving.

395 **Class No**  
 4 **No. of weeks**  
 Monday **Day**  
 19:00 - 21:00 **Time**  
 Julie Hyde **Tutor**  
 £ 70.00 **Cost**  
 College of Further Education **Location**  
 03/11/2014 **Commence**



# FLEXIBLE LEARNING CENTRE

## IT & SECRETARIAL SKILLS TRAINING

For everyone from the complete beginner who has never touched a computer, to the professional business user, we can offer something for everyone at times to suit you.

Our wide range of courses covers Microsoft 2013 applications in Word, Excel, Powerpoint, Access, Publisher, Outlook, Internet Explorer. Basic skills to accredited qualifications.

### OUR CLIENTS

We provide skills training for a wide range of clients aged 16+

- People in employment or changing career
- Self-employed business people
- Mums returning to work
- Retired people

### HOW IT WORKS

- Excellent training at low cost prices
- Trained tutor support and feedback
- Workshop basis
- Self-study – learning from written materials
- Centre is open 5 days a week
- Sessions morning, afternoon and evening
- Courses may be commenced any time during the year (term time only)
- Friendly, relaxed environment

### OPEN DAY / EVENING

Room L105  
Les Ozouets Campus

**Thursday**  
**4 September 2014**  
**10.00 am – 2.00 pm**  
**5.30 pm – 7.30 pm**

**Pop in and see us for  
more information or just  
an informal chat about  
your personal learning  
plans**

## NEW TERM BEGINS MONDAY 8 SEPTEMBER 2014

## ENROL AND START ANY DAY DURING NORMAL TERM-TIME

CONTACT US from Tuesday 26 August 2014

Teaching staff: Michelle Coumbe [michellec@gcfe.net](mailto:michellec@gcfe.net) Sue Le Gallez [suel@gcfe.net](mailto:suel@gcfe.net)  
Centre Manager: Alison McDonald [alisonmcdonald@gcfe.net](mailto:alisonmcdonald@gcfe.net)

### SHORTHAND

Evening Class

For details  
please contact tutor:

Anne Setters  
[annes@gcfe.net](mailto:annes@gcfe.net)

or Reception, Les Ozouets Campus, **Tel 749940**



## Gardening - in conjunction with the Parks & Gardens Department

### Gardening for Beginners

A course to tie in with the seasons for the new, occasional or fine weather gardener. The course is 'hands-on' and includes garden maintenance, design, construction, vegetables and cut flowers, patios, containers and plant propagation. Visits to gardens may also be organized.

400	<b>Class No</b>
8	<b>No. of weeks</b>
Saturday	<b>Day</b>
10:00 - 12:00	<b>Time</b>
Malcolm Cleal	<b>Tutor</b>
£85.00 Overs 65yrs £75.00	<b>Cost</b>
Plant Propagation Unit, Burnt Lane, St Martins	<b>Location</b>
04/10/2014	<b>Commence</b>

### Hard Landscaping

A six-week course aimed at those wishing to complete basic home hard-landscaping projects and includes patios, decking, paving, fencing, ponds and low walls.

401	<b>Class No</b>
6	<b>No. of weeks</b>
Saturday	<b>Day</b>
10:00 - 12:00	<b>Time</b>
Malcolm Cleal	<b>Tutor</b>
£85.00 Overs 65yrs £75.00	<b>Cost</b>
Plant Propagation Unit, Burnt Lane, St Martins	<b>Location</b>
10/01/2015	<b>Commence</b>

### The Improving Gardener

A course to tie in with the seasons for the improving gardener. The course is 'hands-on' and includes garden maintenance, design, construction, vegetables and cut flowers, patios, containers and plant propagation. Visits to gardens may also be organized.

402	<b>Class No</b>
8	<b>No. of weeks</b>
Saturday	<b>Day</b>
10:00 - 12:00	<b>Time</b>
Malcolm Cleal	<b>Tutor</b>
£85.00 Overs 65yrs £75.00	<b>Cost</b>
Plant Propagation Unit, Burnt Lane, St Martins	<b>Location</b>
07/03/2015	<b>Commence</b>

### Plant Propagation

Why buy plants when you can propagate your own? A six-week course suitable for the new or improving gardener who wishes to raise their own plants at minimal cost. Subjects include seed sowing, cutting, layering and division.

403	<b>Class No</b>
6	<b>No. of weeks</b>
Wednesday	<b>Day</b>
19:00 - 21:00	<b>Time</b>
Malcolm Cleal	<b>Tutor</b>
£85.00 Overs 65yrs £75.00	<b>Cost</b>
Plant Propagation Unit, Burnt Lane, St Martins	<b>Location</b>
22/04/2015	<b>Commence</b>





College of Further Education - Maritime Studies Division  
Contact John Frankland  
Telephone 254854



The College of Further Education is an accredited training and examination centre for the Royal Yachting Association (RYA).

All of our courses in marine studies and engineering are led and organised by John Frankland who has been sailing in the islands for more than 25 years. John holds the RYA / MCA Yachtmaster Offshore and Ocean Certificate with commercial endorsements (sail and power), together with the States of Guernsey Skippers' and Engineers' certificates. John is a RYA Instructor and an examiner for the International Certificate of Competence (ICC) and VHF Radio. He is a Safety Check ('SeaCheck') advisor for the RNLI and the author of three Local Pilotage reference books relating to Herm, Sark and the coast of Guernsey.

The programme of courses offered is designed to cater both for those persons who prefer to work towards a certificate and for those who do not. Persons finding it difficult to decide which type of course to follow should contact John Frankland prior to enrolment. For all courses participants will be required to purchase essential charts and equipment.

**Certificated courses**

The certificated courses are provided through the Royal Yachting Association's (RYA) National Cruising Scheme.

**Practical courses and Examinations**

Further details and application forms for the International Certificate of Competence ICC (essential for certain areas of France, Holland and Spain) and examinations can be obtained from John Frankland.

**RYA Essential Navigation & Safety Course**

The RYA Essential Navigation and Safety Course includes basic navigation, anchoring, weather, rules of the road, pilotage and much more. Ideal for newcomers to boating, sail or power, sea anglers, divers, rusty skippers and crew - in fact anyone using the water in a leisure craft.

406	<b>Class No</b>
8	<b>No. of weeks</b>
Tuesday	<b>Day</b>
19:00 - 21:00	<b>Time</b>
John Webster	<b>Tutor</b>
£102.00	<b>Cost</b>
College of Further Education	<b>Location</b>
23/09/2014	<b>Commence</b>

**RYA Essential Navigation & Safety Course**

Repeat course. See description above.

407	<b>Class No</b>
8	<b>No. of weeks</b>
Thursday	<b>Day</b>
19:00 - 21:00	<b>Time</b>
John Webster	<b>Tutor</b>
£102.00	<b>Cost</b>
College of Further Education	<b>Location</b>
25/09/2014	<b>Commence</b>

**RYA Essential Navigation & Safety Course**

Repeat course. See description above.

408	<b>Class No</b>
8	<b>No. of weeks</b>
Tuesday	<b>Day</b>
19:00 - 21:00	<b>Time</b>
John Webster	<b>Tutor</b>
£102.00	<b>Cost</b>
College of Further Education	<b>Location</b>
20/01/2015	<b>Commence</b>

**Day Skipper**

A 25-week RYA course covering all the basic navigation and seamanship required to be able to skipper a vessel from port to port or between the islands. There is no prior knowledge required to start and the subject matter is assessed and examined on a continual basis leading to the issue of the RYA Day Skipper Shore-based Certificate. Fee includes assessment sheets etc.

409	<b>Class No</b>
25	<b>No. of weeks</b>
Monday	<b>Day</b>
19:00 - 21:00	<b>Time</b>
Matthew Le Page	<b>Tutor</b>
£205.00	<b>Cost</b>
Les Ozouets Campus	<b>Location</b>
22/09/2014	<b>Commence</b>

"Our tutor was very positive & encouraging. The course was good fun, whilst informative & left you with a feeling of achievement."



<b>Class No</b>	410	<b>Day Skipper</b> A 25-week RYA course covering all the basic navigation and seamanship required to be able to skipper a vessel from port to port or between the islands. There is no prior knowledge required to start and the subject matter is assessed and examined on a continual basis leading to the issue of the RYA Day Skipper Shore-based Certificate. Fee includes assessment sheets etc.
<b>No. of weeks</b>	25	
<b>Day</b>	Tuesday	
<b>Time</b>	19:00 - 21:00	
<b>Tutor</b>	Howard Barnes	
<b>Cost</b>	£205.00	
<b>Location</b>	Les Ozouets Campus	
<b>Commence</b>	23/09/2014	

<b>Class No</b>	411	<b>Day Skipper</b> Repeat course. See above course description.
<b>No. of weeks</b>	25	
<b>Day</b>	Wednesday	
<b>Time</b>	19:00 - 21:00	
<b>Tutor</b>	David Raines	
<b>Cost</b>	£205.00	
<b>Location</b>	Les Ozouets Campus	
<b>Commence</b>	24/09/2014	

<b>Class No</b>	412	<b>Yachtmaster Offshore</b> <b>Yachtmaster Offshore 1</b> This 30-week course assumes a prior knowledge of at least equivalent to Day Skipper. The aim is to cover all the theory required to be able to skipper a yacht or power vessel on coastal and offshore passages in an efficient and safe manner. A thorough study of chartwork and electronic navigation, tidal heights, meteorology and the Collision Regulations (IRPCS) is assessed and examined. The course is an essential pre-requisite for the Yachtmaster or Coastal-skipper practical examination.
<b>No. of weeks</b>	30	
<b>Day</b>	Wednesday	
<b>Time</b>	19:00 - 21:00	
<b>Tutor</b>	John Frankland	
<b>Cost</b>	£245.00	
<b>Location</b>	Les Ozouets Campus	
<b>Commence</b>	24/09/2014	

<b>Class No</b>	413	<b>French Pilotage: CI &amp; adjacent France</b> This 8-week course includes pilotage, basic navigation and tidal effects for those contemplating travelling further afield. Using British Admiralty chart 2669 we will explore coastlines and marinas between Cherbourg and Lezardrieux; further south from Morlaix to Chanel du Four and on south to the Raz de Sein; across the English Channel to south coast ports and marinas as well as those within the Channel Islands.
<b>No. of weeks</b>	8	
<b>Day</b>	Wednesday	
<b>Time</b>	19:00 - 21:00	
<b>Tutor</b>	John Webster	
<b>Cost</b>	£90.00	
<b>Location</b>	College of Further Education	
<b>Commence</b>	24/09/2014	

<b>Class No</b>	414	<b>French Pilotage: CI &amp; adjacent France</b> This 8-week course includes pilotage, basic navigation and tidal effects for those contemplating travelling further afield. Using British Admiralty chart 2669 we will explore coastlines and marinas between Cherbourg and Lezardrieux; further south from Morlaix to Chanel du Four and on south to the Raz de Sein; across the English Channel to south coast ports and marinas as well as those within the Channel Islands.
<b>No. of weeks</b>	8	
<b>Day</b>	Wednesday	
<b>Time</b>	19:00-21:00	
<b>Tutor</b>	John Webster	
<b>Cost</b>	£90.00	
<b>Location</b>	College of Further Education	
<b>Commence</b>	21/01/2015	

<b>Class No</b>	415	<b>Local Pilotage</b> A closer look at all the standard passages and many lesser-known ones in and around the tricky waters of the islands. There is plenty of information about tides, transits and local marks including those around Herm, Sark and Guernsey's west coast. Whether experienced or new to the island boating scene, this ten-week evening course is full of useful and interesting information.
<b>No. of weeks</b>	10	
<b>Day</b>	Monday	
<b>Time</b>	19:00-21:00	
<b>Tutor</b>	John Frankland	
<b>Cost</b>	£90.00	
<b>Location</b>	Les Ozouets Campus	
<b>Commence</b>	22/09/2014	

<b>Class No</b>	416	<b>Local Pilotage</b> Repeat course. See above course description.
<b>No. of weeks</b>	10	
<b>Day</b>	Monday	
<b>Time</b>	19:00 - 21:00	
<b>Tutor</b>	John Frankland	
<b>Cost</b>	£90.00	
<b>Location</b>	Les Ozouets Campus	
<b>Commence</b>	12/01/2015	

<b>Class No</b>	417	<b>VHF Radiotelephony</b> <b>VHF RADIO: SHORT RANGE CERTIFICATE (SRC)</b> This one-day Saturday course leads to the Short Range Certificate (SRC) which includes the latest digital requirements within the new Global Maritime Distress & Safety System (GMDSS) requirements. This qualification is an essential safety feature for all who go to sea with a VHF radio - including transportable sets - and together with a Ship's Licence, it is a legal requirement. Fee includes all RYA charges for workbook, examination and certificate. A passport photo should be provided on the day.
<b>No. of weeks</b>	1	
<b>Day</b>	Saturday	
<b>Time</b>	09:00-17:00	
<b>Tutor</b>	John Frankland	
<b>Cost</b>	£150.00	
<b>Location</b>	Les Ozouets Campus	
<b>Commence</b>	18/10/2014	



<b>Class No</b>	418	<b>VHF Radiotelephony</b>
<b>No. of weeks</b>	1	<b>VHF RADIO: SHORT RANGE CERTIFICATE (SRC)</b>
<b>Day</b>	Saturday	This one-day Saturday course leads to the Short Range Certificate (SRC) which includes the latest digital requirements within the new Global Maritime Distress & Safety System (GMDSS) requirements. This qualification is an essential safety feature for all who go to sea with a VHF radio - including transportable sets - and together with a Ship's Licence, it is a legal requirement. Fee includes all RYA charges for workbook, examination and certificate. A passport photo should be provided on the day.
<b>Time</b>	09:00 - 17:00	
<b>Tutor</b>	John Frankland	
<b>Cost</b>	£150.00	
<b>Location</b>	Les Ozouets Campus	
<b>Commence</b>	24/01/2015	

<b>Class No</b>	419	<b>VHF Radiotelephony</b>
<b>No. of weeks</b>	1	Repeat course. See description above.
<b>Day</b>	Saturday	
<b>Time</b>	09:00 - 17:00	
<b>Tutor</b>	John Frankland	
<b>Cost</b>	£150.00	
<b>Location</b>	Les Ozouets Campus	
<b>Commence</b>	21/03/2015	

<b>Class No</b>	420	<b>Diesel Engines</b>
<b>No. of weeks</b>	1	<b>Diesel Engines - Repeat Course</b>
<b>Day</b>	Saturday	A one-day short course (usually on a Saturday) dealing with mainly small diesels but also covering the principles of larger diesel engines. This is a 'hands-on' basic skills session and suitable for anyone wishing to learn more about troubleshooting, repair and servicing of these units. No prior experience or knowledge is required and a RYA Completion Certificate is awarded on the day.
<b>Time</b>	09:00 - 17:00	
<b>Tutor</b>	John Frankland	
<b>Cost</b>	£102.00	
<b>Location</b>	College of Further Education	
<b>Commence</b>	15/11/2014	

<b>Class No</b>	421	<b>Diesel Engines</b>
<b>No. of weeks</b>	1	Repeat course. See description above.
<b>Day</b>	Saturday	
<b>Time</b>	09:00 - 17:00	
<b>Tutor</b>	John Frankland	
<b>Cost</b>	£ 102.00	
<b>Location</b>	College of Further Education	
<b>Commence</b>	07/02/2015	

**Survival at Sea**

**Sea Survival**

A one-day, RYA certificated course giving the fundamental knowledge and practical experience of survival principles. Includes a practical session in the swimming pool using standard life-rafts and equipment. You are encouraged to bring your own life-jackets but these can be provided if required. This course is recommended for all who venture offshore.

Please register your interest in this course, by completing and returning the enrolment form in the usual way.

**RYA PPR Certificate**

The Professional Practices and Responsibilities (PPR) Certificate. An essential qualification for those who are applying for or renewing a commercial certificate. The course is undertaken online and comprises four sections:

Commercial environment: showing how you fit into the professional maritime world.

People: explaining the importance of correct manning, keeping skills up to date and the safe management of commercial vessels.

Vessel: teaching about the compulsory carriage and maintenance of safety equipment and how to create and implement risk control and operating procedures.

Purpose: making sure your vessel is suitable and legal for the work you are carrying out, your obligations in protecting the environment, appropriate planning, and situational awareness.

For further details are available from John Frankland on telephone: 254854

<b>Class No</b>	422	<b>Class No</b>
<b>No. of weeks</b>	1	<b>No. of weeks</b>
<b>Day</b>	Thursday	<b>Day</b>
<b>Time</b>	09:00 - 17:00	<b>Time</b>
<b>Tutor</b>	TBA	<b>Tutor</b>
<b>Cost</b>	£ 120.00	<b>Cost</b>
<b>Location</b>	TBC	<b>Location</b>
<b>Commence</b>	01/01/2015	<b>Commence</b>

<b>Class No</b>	423	<b>Class No</b>
<b>No. of weeks</b>	1	<b>No. of weeks</b>
<b>Day</b>	Monday	<b>Day</b>
<b>Time</b>	19:00-21:00	<b>Time</b>
<b>Tutor</b>	John Frankland	<b>Tutor</b>
<b>Cost</b>	£33.00	<b>Cost</b>
<b>Location</b>	College of Further Education	<b>Location</b>

**"As an experienced teacher and tutor, they were very skilled in presenting information and encouraging enough participation to hold interest. His own enthusiasm for his subject is always infectious too."**

**Tai Chi Foundation**

Tai Chi Chuan is an ancient Chinese form of co-ordinated body movements, focusing on cultivation of internal energy ('Chi'). It aims to harmonise mind, body and spirit promoting mental and physical well-being through softness and relaxation. When practised correctly, the Tai Chi movements (or Form) seem rhythmical and effortless, forming a continuous flow. It can also become an effective system of self-defence. Beneficial for relaxing and revitalising mind and body, gently toning and strengthening muscles, improving balance and posture, and building self-confidence and tolerance.

451 **Class No**  
 9 **No. of weeks**  
 Wednesday **Day**  
 19:00 - 20:15 **Time**  
 Rick Fletcher **Tutor**  
 £56.00 Overs 65yrs £51.00 **Cost**  
 Les Beaucamps High **Location**  
 24/09/2014 **Commence**

**Tai Chi Foundation**

Repeat course. See description above.

452 **Class No**  
 9 **No. of weeks**  
 Wednesday **Day**  
 19:00 - 20:15 **Time**  
 Rick Fletcher **Tutor**  
 £56.00 Overs 65yrs £51.00 **Cost**  
 Les Beaucamps High **Location**  
 21/01/2015 **Commence**

**"I enjoyed the course very much and I thought the instructor was excellent."**



**"What a brilliant tutor!"**

**Fit and Flexible with Yoga**

**Sri Sri Yoga**

Gain greater flexibility by learning to use all your muscles. Improve your figure! We use traditional yoga postures, similar to Hatha yoga. It is suitable for all fitness levels.

Busy mind? Learn breathing techniques and a short meditation leading to a relaxed, calm, mind and body. Find out how the ancient natural health system of ayurveda can improve your health combined with tips on healthy eating habits. Yoga helps to overcome addictions. During the course you will learn a simple routine to practice at home.

Please bring a yoga mat and light blanket to cover yourself during final relaxation and eat lightly before you attend the sessions.

453 **Class No**  
 6 **No. of weeks**  
 Thursday **Day**  
 19:00 - 21:00 **Time**  
 Julie Madeley **Tutor**  
 £56.00 Overs 65yrs £50.00 **Cost**  
 Delancey Campus (old **Location**  
 St Sampson's Sec Sch)  
 25/09/2014 **Commence**



**Keep Fit (Men)**

Subject to sufficient enrolments, this course will be divided into two classes after the first evening. Should the course be divided there will be two classes each of 1.5 hours 6.15-7.45 and 7.45-9.15pm. The course includes general fitness sessions i.e. ball games as well as circuits.

Participants should be medically fit to take part in this course.

454 **Class No**  
 16 **No. of weeks**  
 Wednesday **Day**  
 18:15 - 20:15 **Time**  
 Paul Van Beek **Tutor**  
 £120.00 Overs 65yrs £105.00 **Cost**  
 Delancey Campus (old **Location**  
 St Sampson's Sec Sch)  
 24/09/2014 **Commence**



**Class No** 470  
**No. of weeks** 8  
**Day** Monday  
**Time** 19:00 - 21:00  
**Tutor** Anne Diamond  
**Cost** £51.00 Overs 65yrs £46.00  
**Location** Grammar School  
**Commence** 22/09/2014

**BSL101 - Introduction to BSL (British Sign Language)**

**British Sign Language - Beginners**

These courses will be useful for anyone wishing to learn the basics of sign language in order to communicate with deaf persons.

British Sign Language (BSL) courses are of a modular format. The Level 1 Award in British Sign Language comprises three units: BSL101 - Introduction to BSL; BSL102 - Conversational BSL; BSL103 - BSL at School, College or Work. Assessment will be held in each unit as required and once all three units have been completed and assessed, successful students will receive the Signature Level 1 Award in British Sign Language. "Signature" is the name for the organisation previously known as CACDP. A handbook will be available from the tutor on the first evening of the course at an approximate cost of £8.00. Workshop days may be arranged which will involve the payment of an additional fee. Students who are entered for assessments will have an assessment fee payable to Signature.



**Class No** 471  
**No. of weeks** 8  
**Day** Monday  
**Time** 19:00 - 21:00  
**Tutor** Anne Diamond  
**Cost** £51.00 Overs 65yrs £46.00  
**Location** Grammar School  
**Commence** 19/01/2015

**BSL102 - Conversational BSL**

See Course no 470. This course may also have workshops with a tutor from Jersey which will incur an extra cost.

**Class No** 472  
**No. of weeks** 6  
**Day** Monday  
**Time** 19:00 - 21:00  
**Tutor** Anne Diamond  
**Cost** £50.00 Overs 65yrs £46.00  
**Location** Grammar School  
**Commence** 11/05/2015

**BSL103 - BSL at School, College or Work**

See course description above. Continuation of BSL course.

**Intro to Car Maintenance**

This course provides a practical introduction to basic car maintenance. It is expected that you will gain an understanding and have confidence in tackling straightforward car maintenance tasks. We will look at all aspects of car maintenance and by the end of the course you will be able to decide when to go to the garage and which tasks you can safely undertake by yourself. Students must have a smock or overalls, and safety shoes or boots.

Suitable for all levels of knowledge in a friendly environment. No previous knowledge is required.

**Class No** 473  
**No. of weeks** 8  
**Day** Tuesday  
**Time** 19:00 - 21:00  
**Tutor** Robert Phelps  
**Cost** £80.00 Overs 65yrs £75.00  
**Location** College of Further Education  
**Commence** 23/09/2014

**Guernsey Driving Theory Test**

A course of two Tuesday evenings from 7 pm to 9 pm which provides support and guidance in preparing for the Guernsey Driving Theory Test. Please contact Adult Education on 737585 to register your interest for the next course, or complete the enrolment form and return to Adult Education in the usual way.

**Class No** 474  
**No. of weeks** 2  
**Day** Tuesday  
**Time** 19:00 - 21:00  
**Tutor** Brian Martel  
**Cost** £25.00  
**Location** College of Further Education  
**Commence** 23/09/2014

**Guernsey Driving Theory Test**

See course description above.

**Class No** 475  
**No. of weeks** 2  
**Day** Tuesday  
**Time** 19:00 - 21:00  
**Tutor** Brian Martel  
**Cost** £25.00  
**Location** College of Further Education  
**Commence** 27/01/2015





**Class No** 490  
**No. of weeks** 8  
**Day** Wednesday  
**Time** 19:30 - 21:00  
**Tutor** Sue Laker  
**Cost** £65.00 Overs 65yrs £60.00  
**Location** Priaulx Library  
**Commence** 24/09/2014

**Introduction to the Priaulx Library**

A general introduction including a tour of the library, its rare book collection from the 18th and 19th centuries, and book conservation. We will examine maps, newspapers, prints, drawings, photographs, postcards and letters held at the Priaulx Library. There is also the opportunity to take a look at the family history resources.

**Class No** 491  
**No. of weeks** 8  
**Day** Monday  
**Time** 19:00 - 21:00  
**Tutor** Martin Jones  
**Cost** £72.00 Overs 65yrs £68.00  
**Location** St Sampson's High School  
**Commence** 22/09/2014

**Beginners Bridge - Module 1**

The course will cover the Standard English ACOL System as recommended by the EBU and will cover aspects of hand evaluation, bidding, defending, card play and scoring.

The aim of Module 1 is for beginners to learn to play very basic Bridge.

**Class No** 492  
**No. of weeks** 8  
**Day** Monday  
**Time** 19:00 - 21:00  
**Tutor** Martin Jones  
**Cost** £72.00 Overs 65yrs £68.00  
**Location** St Sampson's High School  
**Commence** 19/01/2015

**Beginners Bridge - Module 2**

For those students who have covered Module 1 or who can play a basic game of Bridge.

**Operation Overlord, Normandy Invasion - June 1944**

The course begins with understanding Allied and German positions prior to the invasion, then follows the famous areas of the invasion front including Omaha Beach, Pegasus Bridge, etc. The course finishes with the breakout of Allied forces from Normandy. There will be an optional private tour at the end of the course hosted by the tutor for which there will be an additional cost to be arranged with the tutor.

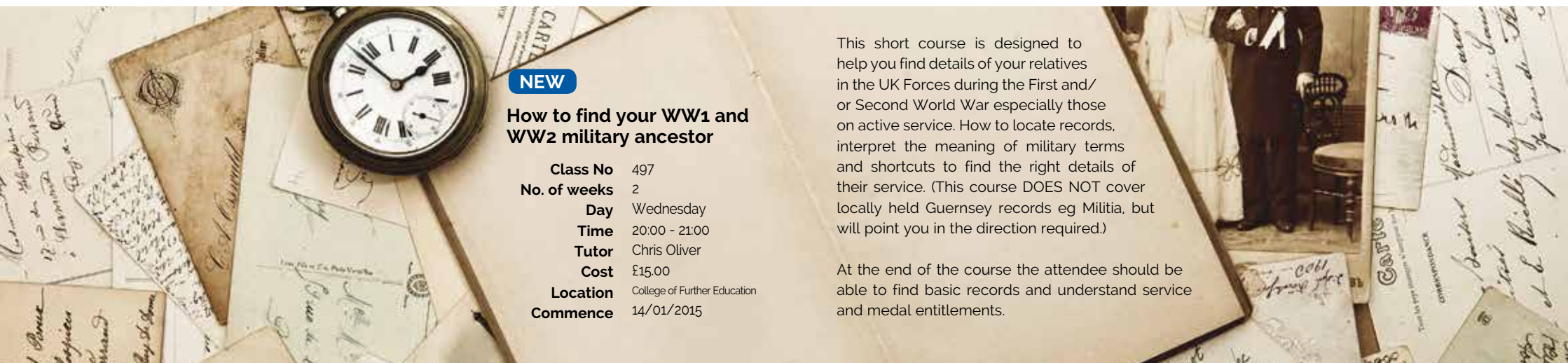
**Class No** 495  
**No. of weeks** 7  
**Day** Monday  
**Time** 18:00 - 20:00  
**Tutor** Chris Oliver  
**Cost** £65.00 Overs 65yrs £60.00  
**Location** College of Further Education  
**Commence** 12/01/2015

**Operation Market Garden, A Bridge Too Far, 1944**

Students will get an oversight of some of the major strategic plans and actions of Operation Market Garden during September 1944. The course begins with understanding the Allies in Europe following the Normandy Invasion, General Montgomery's plan to invade the Low Countries in Sept 1944 with the objective of capturing the Rhineland and the Ruhr industries of Germany, and ending the war by Christmas.

**Class No** 496  
**No. of weeks** 4  
**Day** Wednesday  
**Time** 18:00 - 19:45  
**Tutor** Chris Oliver  
**Cost** £40.00  
**Location** College of Further Education  
**Commence** 14/01/2015

The participant will be able to use this knowledge in future research or battlefield exploration. There will be an optional private field trip at the end of the course



**NEW**

**How to find your WW1 and WW2 military ancestor**

**Class No** 497  
**No. of weeks** 2  
**Day** Wednesday  
**Time** 20:00 - 21:00  
**Tutor** Chris Oliver  
**Cost** £15.00  
**Location** College of Further Education  
**Commence** 14/01/2015

This short course is designed to help you find details of your relatives in the UK Forces during the First and/ or Second World War especially those on active service. How to locate records, interpret the meaning of military terms and shortcuts to find the right details of their service. (This course DOES NOT cover locally held Guernsey records eg Militia, but will point you in the direction required.)

At the end of the course the attendee should be able to find basic records and understand service and medal entitlements.



**Class No** 498  
**No. of weeks** 4  
**Day** Wednesday  
**Time** 20:00 - 21:00  
**Tutor** Chris Oliver  
**Cost** £40.00  
**Location** College of Further Education  
**Commence** 28/01/2015

**NEW**

**The Start of the Western Front - Marne and Ypres**

An overview to the starting battles of the Western Front in 1914 and early 1915, which set the trench positions for the next three years.

The student will understand how the Western Front came to be, and the strategy, tactics and day-to-day life of the soldier during WW1. This course will be very helpful to those planning to visit the sites or researching family military history of the era.

**Class No** 499  
**No. of weeks** 5  
**Day** Tuesday  
**Time** 19:00 - 21:00  
**Tutor** Chris Hurley  
**Cost** £45.00  
**Location** College of Further Education  
**Commence** 24/02/2015

**NEW**

**JFK - Aspects of Assassination**

A series of five two-hour sessions investigating some of the controversial aspects of the assassination of John F Kennedy. Each of the sessions is organised as a seminar in two parts: the first hour involves a lecture, with visual aids and web references, to be followed by a questions, answers and discussion period during which participants are encouraged to evaluate different interpretations of the topic under consideration.

Those attending do not require special knowledge of the assassination and the atmosphere is always informal and free thinking.

**Class No** 500  
**No. of weeks** 6  
**Day** Thursday  
**Time** 19:00 - 21:00  
**Tutor** Maria van der Tang  
**Cost** £65.00 Overs 65yrs £60.00  
**Location** College of Further Education  
**Commence** 02/10/2014

**Family History for Beginners - Getting Started**

This course is aimed at complete beginners. "Where do I begin?". The course provides a good grounding for those who want to learn about researching into family history. The course is a mixture of theoretical and practical activities including advice and work on records and tracing family trees. Course material is well produced and is backed by a series of power point presentations. Visits to the island archives and/or the Priaulx Library may be made by arrangement with the group.

**"In my opinion both the content, delivery and approachability of these sessions and especially the tutor were outstanding. I would not hesitate to enrol again with this tutor."**

**Digital SLR Photography**

A beginners course aimed at those who have a digital SLR camera (not compact camera) and want to get the best use of it. Participants will need to bring their own SLR digital camera to each session. Topics covered will include operating the camera in manual mode, optimising the camera settings, exposure, apertures, shutter speeds, downloading images, and improving photographic techniques. The course will include classroom tuition and some fieldwork sessions generally on a Sunday morning or afternoon.

**Class No** 501  
**No. of weeks** 6  
**Day** Wednesday  
**Time** 19:00-21:00  
**Tutor** Nick Despres  
**Cost** £90.00  
**Location** College of Further Education  
**Commence** 24/09/2014

**Digital SLR Photography**

Repeat course. See description above.

**Class No** 502  
**No. of weeks** 6  
**Day** Wednesday  
**Time** 19:00 - 21:00  
**Tutor** Nick Despres  
**Cost** £90.00  
**Location** College of Further Education  
**Commence** 12/11/2014

**503** **Class No**  
**6** **No. of weeks**  
**Wednesday** **Day**  
**19:00 - 21:00** **Time**  
**Nick Despres** **Tutor**  
**£90.00** **Cost**  
**College of Further Education** **Location**  
**21/01/2015** **Commence**

**Digital SLR Photography**

Repeat course. See description above.

**Class No** 504  
**No. of weeks** 5  
**Day** Tuesday  
**Time** 19:00 - 21:00  
**Tutor** Trevor Wakefield  
**Cost** £51.00  
**Location** Performing Arts Centre, Les Ozouets  
**Commence** 20/01/2015

**Public Speaking**

For those who wish to increase their confidence and would like to improve their skills in speaking, communicating and voice production in an enjoyable, non-threatening environment.

**Class No** 505  
**No. of weeks** 8  
**Day** Thursday  
**Time** 19:00 - 21:00  
**Tutor** Tony Talmage  
**Cost** £65.00  
**Location** Les Ozouets Campus  
**Commence** 25/09/2014

**Introduction to Dowsing**

Designed for beginners or those with a basic knowledge of this ancient art, this course will cover: what dowsing is and how it works, the history of dowsing and its many uses today, the dowsing tools and how to use them. Sessions will be practical, and will cover the 4 main specialties: water and minerals, archaeology, health, and subtle energies. For most people dowsing is a useful and fascination skill which can enhance their lives in so many ways.

**510 Class No**  
**12 No. of weeks**  
**Thursday Day**  
**19:30 - 21:00 Time**  
**Rod Ferbrache Tutor**  
**£75.00 Overs 65yrs £70.00 Cost**  
**Grammar School Location**  
**22/01/2015 Commence**



**Birdwatching getting you started**

This course is aimed at people who have an interest in the wildlife in Guernsey and who also want to know more about the birds they see and when, and where to see them. The course consists of eight classroom sessions and four guided field trips.

**Youth Partnership for Guernsey and Alderney**

**Class No** 509  
**No. of weeks** 10  
**Day** Monday  
**Time** 19:00 - 21:00  
**Tutor** Ruth Collins  
**Cost** £82.00  
**Location** Grammar School  
**Commence** 23/02/2015

**Getting Started in Youth Work (Level 1)**

**Four sessions:**

**Introduction to Youth Work:** provides an overview of youth work.

**Youth Work Principles:** inc. youth participation and the learning environment.

**Youth Work Practice:** inc. Policy and procedures, Health & Safety.

**Youth Work Practice:** inc. planning and evaluating your work, dealing with challenging behaviour and using Restorative Justice principles.

Open to anyone aged 16 years or over currently engaged in youth work or with an interest in **working** or **volunteering** with young people.

The Youth Commission Office on 756099 or e-mail [info@youthcommission.gg](mailto:info@youthcommission.gg)



**Introduction to Beekeeping**

For complete beginners or those with experience of this fascinating subject, it can be joined purely for interest, though it could lead to taking up beekeeping! It consists of theory and practical sessions.

There will be five illustrated theory evenings to include the life-cycle of the honey bee, getting your first bees, the beekeeper's year, 'tools of the trade' etc. The five practical sessions between April and June will be held on weekends or evenings (subject to weather conditions) at different beekeeping sites on the island. Necessary protective clothing will be supplied for these practical sessions where participants may gain 'hands-on' experience if they so wish. Subjects will include finding and marking the queen, swarm control, removing the honey crop etc.



**509 Class No**  
**10 No. of weeks**  
**Monday Day**  
**19:00 - 21:00 Time**  
**Ruth Collins Tutor**  
**£82.00 Cost**  
**Grammar School Location**  
**23/02/2015 Commence**

**"Ours was an exceptional tutor. His knowledge is first class, his practical approach to his subject and the way he runs his class is very refreshing. Definitely to be recommended."**



**Class No** 520  
**No. of weeks** 5  
**Day** Tuesday  
**Time** 19:00 - 21:00  
**Tutor** Victor Lane  
**Cost** £55.00 Overs 65yrs £50.00  
**Location** Amherst School  
**Commence** 23/09/2014

**Making More of your Apple - stage 1**

A five-week course for those who use an Apple Mac. The sessions are not for whiz kids but for those who feel they know very little and want to get more out of their Apple computer. Sessions will cover areas such as using built-in applications, storing and sorting files and using peripherals such as printers, scanners and cameras.

**Class No** 521  
**No. of weeks** 5  
**Day** Tuesday  
**Time** 19:00 - 21:00  
**Tutor** Victor Lane  
**Cost** £55.00 Overs 65yrs £50.00  
**Location** Amherst School  
**Commence** 13/01/2015

**Making More of your Apple - stage 1**

Repeat course. See description above.

**Class No** 522  
**No. of weeks** 5  
**Day** Tuesday  
**Time** 19:00 - 21:00  
**Tutor** Victor Lane  
**Cost** £55.00 Overs 65yrs £50.00  
**Location** Amherst School  
**Commence** 04/11/2014

**Making More of your Apple - stage 2**

These sessions will allow attendees to build on their knowledge and experience of their Mac and its standard software. The focus will be on typical tasks and activities that Mac users undertake. At the end of the sessions attendees should be able to achieve what they want with their Mac more quickly and efficiently.

**Class No** 523  
**No. of weeks** 5  
**Day** Tuesday  
**Time** 19:00 - 21:00  
**Tutor** Victor Lane  
**Cost** £55.00 Overs 65yrs £50.00  
**Location** Amherst School  
**Commence** 24/03/2015

**Making More of your Apple - stage 3**

This course builds on Levels 1 and 2, and we give the opportunity for course members to go further with the software and activities the group choose.

**"As an experienced teacher and tutor, they were very skilled in presenting information and encouraging enough participation to hold interest. His own enthusiasm for his subject is always infectious too."**



**In my opinion both the content, delivery and approachability of these sessions and especially the tutor were outstanding. I would not hesitate to enrol again with this tutor.**

**Computers for Senior Citizens Part 1**

These courses are targeted at this particular age group, assume no previous knowledge of computers and proceed at a pace suitable for those who may be apprehensive of new technologies. A suitable desktop computer will be made available for every participant, but you are encouraged to bring your own laptop or tablet to the first session and if suitable you'll be able to complete the rest of the course using your own equipment.

524 **Class No**  
 8 **No. of weeks**  
 Monday **Day**  
 2.15 - 3.30 **Time**  
 Alice Coggins **Tutor**  
 £55.00 **Cost**  
 College of Further Education **Location**  
 22/09/2014 **Commence**

**Computers for Senior Citizens Part 1**

Repeat course. See description above.

525 **Class No**  
 8 **No. of weeks**  
 Monday **Day**  
 15.45 - 5.00 **Time**  
 Alice Coggins **Tutor**  
 £55.00 **Cost**  
 College of Further Education **Location**  
 22/09/2014 **Commence**

**Class No** 526  
**No. of weeks** 8  
**Day** Monday  
**Time** 14.15 - 15.30  
**Tutor** Alice Coggins  
**Cost** £55.00  
**Location** College of Further Education  
**Commence** 19/01/2015

### Computers for Senior Citizens Part 1

The courses are for senior citizens and assume no previous knowledge of computers. The sessions proceed at a pace suitable for those who may be apprehensive of new technologies. A suitable desktop computer will be made available for every participant, but you are encouraged to bring your own laptop or tablet to the first session and if suitable, you'll be able to complete the rest of the course using your own equipment.

**Class No** 527  
**No. of weeks** 8  
**Day** Monday  
**Time** 15.45 - 17.00  
**Tutor** Alice Coggins  
**Cost** £55.00  
**Location** College of Further Education  
**Commence** 19/01/2015

### Computers for Senior Citizens Part 2

These courses are for senior citizens who attended a part 1 class or those who have some knowledge. A suitable desktop computer will be made available for every participant, but you are encouraged to bring your own laptop or tablet to the first session and if suitable, you'll be able to complete the rest of the course using your own equipment.

**Class No** 528  
**No. of weeks** 6  
**Day** Monday  
**Time** 14.15 - 15.30  
**Tutor** Alice Coggins  
**Cost** £45.00  
**Location** College of Further Education  
**Commence** 11/05/2015

### Computers for Senior Citizens Part 1

Repeat course. See description above.

**Class No** 529  
**No. of weeks** 6  
**Day** Monday  
**Time** 15.45 - 16.45  
**Tutor** Alice Coggins  
**Cost** £45.00  
**Location** College of Further Education  
**Commence** 11/05/2015

### Computers for Senior Citizens Part 2

Repeat course. See description for course 527.

**“Our tutor has such great knowledge of his subject, it’s a joy to be taught by him”**



**In addition to the large number of evening classes that take place at various locations throughout the island, the Adult Education Programme also features courses and workshops that take place during the day. These daytime courses are a very important part of the Adult Education Service and we are very grateful to our tutors for sharing their skills and expertise.**

Two spacious and well-lit classrooms have been allocated to Adult Education in Guernsey College of Further Education's refurbished premises at Les Ozouets Campus, St Peter Port.

Les Ozouets Campus is the former St Peter Port Secondary School situated in Les Ozouets Road, St Peter Port.

The Adult Education Classrooms are situated at the rear of the building and can be accessed via the Main Entrance and then turn right at the end of the corridor. There is a car park at the front of the building and additional parking spaces are available next to the Princess Royal Centre for Performing Arts. For those of you who need to carry bulky items, trollies will be available to assist you with transporting them from your car to the Adult Education Classrooms.



**Class No** 540  
**No. of weeks** 16  
**Day** Monday  
**Time** 09:30-11:30  
**Tutor** Jane Seymour  
**Cost** £125.00 Overs 65yrs £110.00  
**Location** Les Ozouets Campus  
**Commence** 22/09/2014

**Craft Workshop**

Participants will receive some individual tuition and be able to exchange ideas on a range of crafts including: soft furnishings, basic re-upholstery, chair caning, rush seating etc.

Please note there is no storage for large items at Les Ozouets, (formerly St Peter Port School).

**Class No** 541  
**No. of weeks** 16  
**Day** Thursday  
**Time** 09:30 - 11:30  
**Tutor** Jane Seymour  
**Cost** £125.00 Overs 65yrs £110.00  
**Location** Les Ozouets Campus  
**Commence** 25/09/2014

**Craft Workshop**

Participants will receive some individual tuition and be able to exchange ideas on a range of crafts including: soft furnishings, basic re-upholstery, chair caning, rush seating etc.

Please note there is no storage for large items at Les Ozouets, formerly St Peter Port School.

**Class No** 542  
**No. of weeks** 16  
**Day** Wednesday  
**Time** 14:00 - 16:00  
**Tutor** Jenny Mahy  
**Cost** £125.00 Overs 65yrs £110.00  
**Location** Les Ozouets Campus  
**Commence** 24/09/2014

**NEW**

**A Box of Delights**

Using vibrant velvets and shimmering satins, students will create an exotic, richly-textured box either in their own design or working from one of the tutor's examples. The manipulated fabric surface will be further enhanced with beadwork and hand stitching.

**Class No** 543  
**No. of weeks** 8  
**Day** Tuesday  
**Time** 14:00 - 16:00  
**Tutor** Jenny Mahy  
**Cost** £67.00 Overs 65yrs £62.00  
**Location** Les Ozouets Campus  
**Commence** 23/09/2014

**NEW**

**Crazy Patchwork Handbag**

Students will use a variety of different types / weights of fabric combined with simple handstitching to create a truly desirable and totally unique bag. Sewing machine required.

**Class No** 544  
**No. of weeks** 8  
**Day** Tuesday  
**Time** 14:00 - 16:00  
**Tutor** Jenny Mahy  
**Cost** £67.00 Overs 65yrs £62.00  
**Location** Les Ozouets Campus  
**Commence** 20/01/2015

**NEW**

**Free-form Patchwork 'Don't think - Stitch!'**

Students will use random cutting and stitching to create a unique piece of patchwork - without a pattern. Some fabrics will be hand-dyed and printed to ensure the finished item is a one-off!

Students may work on a series of simple bags or a larger item if they prefer.

**Mixed Media and Craft**

The intention of this course is to produce beautiful pieces of art from all sorts of materials. Some basic art kit will be needed (to be discussed at the first meeting), but apart from that, useful materials can be sourced from waste paper, sewing work-boxes, forgotten corners of the house, etc. No specialist expertise is needed - but a dollop of imagination is always useful! Some materials will need to be purchased and advice will be given by the tutor.

**Class No** 545  
**No. of weeks** 16  
**Day** Monday  
**Time** 13:30 - 15:30  
**Tutor** Mary Bairds  
**Cost** £125.00 Overs 65yrs £110.00  
**Location** Les Ozouets Campus  
**Commence** 22/09/2014

**Painting Workshop**

This is an opportunity for those with some experience to be a part of a group, painting on an individual basis with limited tutorial assistance.

**Class No** 546  
**No. of weeks** 16  
**Day** Monday  
**Time** 13:30 - 15:30  
**Tutor** Margaret Cognoli  
**Cost** £120.00 Overs 65yrs £105.00  
**Location** Les Ozouets Campus  
**Commence** 22/09/2014



"I would recommend my course to anyone and I look forward to enrolling in other Adult Education Courses in the near future!"

**Class No** 547  
**No. of weeks** 8  
**Day** Tuesday  
**Time** 13:30-15:30  
**Tutor** Frances Lemmon  
**Cost** £75.00 Overs 65yrs £70.00  
**Location** Les Ozouets Campus  
**Commence** 23/09/2014

**NEW**

**Fun with Painting and Drawing**

Suitable for absolute beginners and those with more experience. Looking at still life, life and landscape drawing using charcoal, pencil, pastel, sanguine, graphite, pen and wash, acrylic and oil.

We will gradually develop core drawing and painting skills by looking at a broad variety of techniques, materials and styles.

Please bring any materials you have at home.

**Class No** 548  
**No. of weeks** 8  
**Day** Tuesday  
**Time** 13:30-15:30  
**Tutor** Frances Lemmon  
**Cost** £75.00 Overs 65yrs £70.00  
**Location** Les Ozouets Campus  
**Commence** 20/01/2015

**NEW**

**Fun with Painting and Drawing**

Repeat course. See description above.

**Class No** 549  
**No. of weeks** 8  
**Day** Thursday  
**Time** 09:30-11:30  
**Tutor** Lynne Skillett  
**Cost** £60.00 Overs 65yrs £55.00  
**Location** Les Ozouets Campus  
**Commence** 25/09/2014

**Flower Arranging - All Levels**

Enjoy learning the art of Flower Arranging in a relaxed and friendly class which is suitable for beginners and those with some experience. Both modern and traditional designs will be covered. The courses are of 8 weeks' duration and classes will meet fortnightly on alternate weeks in the autumn and spring terms.

**Class No** 550  
**No. of weeks** 8  
**Day** Friday  
**Time** 09:30-11:30  
**Tutor** Lynne Skillett  
**Cost** £60.00 Overs 65yrs £55.00  
**Location** Les Ozouets Campus  
**Commence** 26/09/2014

**Flower Arranging - All Levels**

Repeat course. See description above.

**"I would recommend my course to anyone and I look forward to enrolling in other Adult Education Courses in the near future!"**

**Flower Arranging - All Levels**

Repeat course. See description opposite page.

**Class No** 551  
**No. of weeks** 8  
**Day** Thursday  
**Time** 09:30-11:30  
**Tutor** Lynne Skillett  
**Cost** £60.00 Overs 65yrs £55.00  
**Location** Les Ozouets Campus  
**Commence** 02/10/2014

**Flower Arranging - All Levels**

Repeat course. See description opposite page.

**Class No** 552  
**No. of weeks** 8  
**Day** Friday  
**Time** 09:30 - 11:30  
**Tutor** Lynne Skillett  
**Cost** £60.00 Overs 65yrs £55.00  
**Location** Les Ozouets Campus  
**Commence** 03/10/2014

**Digital SLR Photography**

A beginners course aimed at those who have a digital SLR camera (not compact camera) and want to get the best use of it. Participants will need to bring their own SLR digital camera to each session. Topics covered will include operating the camera in manual mode, optimising the camera settings, exposure, apertures, shutter speeds, downloading images, and improving photographic techniques. The course will include classroom tuition and fieldwork sessions.

**Class No** 553  
**No. of weeks** 6  
**Day** Thursday  
**Time** 14:00-16:00  
**Tutor** Nick Despres  
**Cost** £90.00  
**Location** Les Ozouets Campus  
**Commence** 22/01/2015

**Writing For Pleasure**

Have you always wanted to write? Do you feel you have a story to tell? If so, this is the course for you. It aims to release your inner writer, then encourages you to keep writing with a series of weekly workshops. We cover prose, biography, poetry, research, local writing, competitions, markets, using the net ... and much more.

**Class No** 554  
**No. of weeks** 16  
**Day** Wednesday  
**Time** 09:30 - 11:30  
**Tutor** Pippa McCathie  
**Cost** £125.00 Overs 65yrs £110.00  
**Location** Les Ozouets Campus  
**Commence** 24/09/2014

**"Thank you GCFE – this is my third adult education course and all have been great. Wont be the last!"**

**Class No** 555  
**No. of weeks** 5  
**Day** Wednesday  
**Time** 14:00 - 16:00  
**Tutor** Gregory Stevens-Cox  
**Cost** £51.00 Overs 65yrs £48.00  
**Location** Les Ozouets Campus  
**Commence** 12/11/2014

**NEW**

## The History of St Peter Port

Gregory Stevens-Cox will explore the History of St Peter Port over 5 sessions.

**Class No** 556  
**No. of weeks** 8  
**Day** Wednesday  
**Time** 14:00 - 16:00  
**Tutor** Gregory Stevens-Cox  
**Cost** £64.00 Overs 65yrs £60.00  
**Location** Les Ozouets Campus  
**Commence** 21/01/2015

**NEW**

## Day-by-day with Victor Hugo 1865-1870

An exploration of Hugo's life following him through his notebooks and diaries.

**Class No** 557  
**No. of weeks** 8  
**Day** Monday  
**Time** 09:30 - 11:30  
**Tutor** Martin Jones  
**Cost** £72.00 Overs 65yrs £68.00  
**Location** Les Ozouets Campus  
**Commence** 22/09/2014

**NEW**

## Bridge - Module 3

This course is for students who have completed the first year or Modules 1 and 2, or have played some Bridge before.

**Class No** 558  
**No. of weeks** 8  
**Day** Monday  
**Time** 09:30 - 11:30  
**Tutor** Martin Jones  
**Cost** £72.00 Overs 65yrs £68.00  
**Location** Les Ozouets Campus  
**Commence** 19/01/2015

**NEW**

## Bridge - Module 4

For those students who have completed Module 3.

**Class No** 559  
**No. of weeks** 8  
**Day** Wednesday  
**Time** 09:30 - 11:30  
**Tutor** Martin Jones  
**Cost** £72.00 Overs 65yrs £68.00  
**Location** Les Ozouets Campus  
**Commence** 24/09/2014

**NEW**

## Bridge - Module 5

For players who have completed 2 years and want to learn more conventions.

## Bridge - Module 6

For those students who have completed 2 years and want to learn more conventions.

**NEW**

**Class No** 560  
**No. of weeks** 8  
**Day** Wednesday  
**Time** 09:30 - 11:30  
**Tutor** Martin Jones  
**Cost** £72.00 - £68.00  
**Location** Les Ozouets Campus  
**Commence** 21/01/2015

## French Conversation

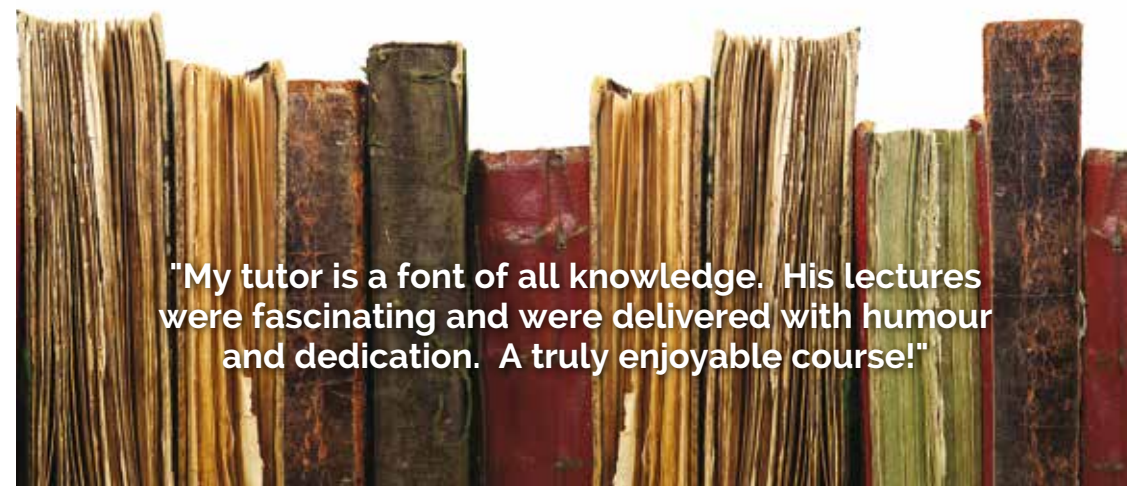
This course is for students who are already able to make themselves understood in a holiday situation, and now wish to expand their knowledge to be able to hold a general conversation whilst still doing some revision of grammar.

**Class No** 561  
**No. of weeks** 16  
**Day** Tuesday  
**Time** 09:30 - 11:30  
**Tutor** Ghislaine Bougourd  
**Cost** £120.00 Overs 65yrs £110.00  
**Location** Les Ozouets Campus  
**Commence** 23/09/2014

## Introduction to the Priaux Library

A general introduction including a tour of the Library, its rare book collection from the 18th and 19th centuries, and book conservation. We will examine maps, newspapers, prints, drawings, photographs, postcards and letters held at the Priaux Library. There is also the opportunity to take a look at the family history resources

**Class No** 562  
**No. of weeks** 8  
**Day** Thursday  
**Time** 10:30 - 12:00  
**Tutor** Sue Laker  
**Cost** £65.00 Overs 65yrs £60.00  
**Location** Priaux Library  
**Commence** 25/09/2014



"My tutor is a font of all knowledge. His lectures were fascinating and were delivered with humour and dedication. A truly enjoyable course!"



# HIT YOUR TARGETS



## WEB DESIGN & DIGITAL MARKETING

Measurable, mobile and slick - We build beautiful responsive websites that perform no matter the device.  
 SEO that climbs - Destination page one.  
 Email that delivers - Cold or warm data, we will make it hot.



01481 729998

hello@madco.co www.madco.co

Apprenticeship Scheme	6, 7	<b>Fitness:</b>	
<b>Art &amp; Craft:</b>		Keep Fit (Men)	47
Art & Design (part time)	6	Tai Chi Foundation	46
Christmas Crafts	32	Yoga, Fit & Flexible with	47
Fun with Painting and Drawing	26, 62	Furniture Restoration and Conservation	30
Mixed Media & Craft	61		
Mixed Media Extravaganza	26	<b>Gardening:</b>	
Painting Workshop (daytime)	61	Gardening for Beginners	39
Pottery	26	Hard Landscaping	39
Watercolours for Beginners	26	The Improving Gardener	39
Beekeeping, an Introduction To	55	Plant Propagation	39
Bird Watching, 'Getting you Started'	55		
Bridge, Beginners	50, 64, 65	<b>GCSE &amp; GCE Courses:</b>	
Car Maintenance, Introduction to	49	Business and Communications GCSE	18
		Film Studies AS Level	19
<b>Cookery:</b>		Psychology AS & A2 Levels	18
Cake Decorating	36	Hairdressing & Beauty Therapy (part time/ full time)	5
One day Master Classes	35	Health & Early Years Courses (part time)	6
Sugar Craft	36	Hospitality and Catering	5
Barista Coffee Course	37		
Computers & IT:		<b>History:</b>	
Computers for Senior Citizens	57, 58	Day by Day with Victor Hugo (daytime)	64
IT (part time)	5	Family History for Beginners - Getting Started	52
Making More of your Apple	56	History of St Peter Port (daytime)	64
Community Theatre	22	How to Find your WWI & WWII Military Ancestor	50
Driving Theory Test	49	JFK Course - Aspects of an Assassination	52
Dowsing, Introduction to	54	Operation Market Garden, a Bridge Too Far 1944	51
English	6, 14	Operation Overlord, Normandy Invasion 1944	51
English for Speakers of Other Languages (ESOL)	15		
Flexible- Learning, IT & Secretarial Skills	5, 38		
Flower Arranging	62, 63		
Finance, Business & HR (part time)	5		



# Index

The Start of the Western Front – Marne & Ypres	52	VHF Radiotelephony	43, 44
Jewellery, silversmithing	30	Yacht Master Offshore	42
<b>Languages:</b>		<b>Sewing:</b>	
French Complete Beginners	20	And Sew On	28
French Conversation (daytime)	65	Bags and Cushions	29
French Conversation Intermediate 1&2	20	Crazy Patchwork Handbag (day)	60
Mandarin	6	Crochet – Soft Toys for Beginners	29
Spanish Beginners	21	Embroidery, A Box of Delights (day)	60
Spanish Elementary and Conversation	21	Here We Sew Again	28
Guernsey French Beginners	21	Patchwork, Freeform 'Don't think – Stitch' (day)	60
Russian Language and Culture	21	Sewing and Alterations	28, 29
Management Studies (part time)	5	Sign Language, BSL	48
Maths	6, 14	<b>Singing:</b>	
<b>Metal Work:</b>		Carry on Singing	23
Basic Welding	31	Guernsey Glees Singers	24
Working with Metal	31	Guernsey Choral and Orchestral Society Choir	25
<b>Musical Instruments:</b>		Guernsey Choral and Orchestral Society Orchestra	24
Banjo - 5 String Bluegrass, Beginners'	23	<b>Soft Furnishings/Re-upholstery:</b>	
Guitar, Classical	23	Soft Furnishings	28
Office Administration Skills (part time)	5	Craft Workshop	60
Photography, Digital SLR	53, 63	Teacher Training, Initial (part time)	6
Priault Library, Introduction to	50, 65	Wine Appreciation	37
Public Speaking	54	Woodwork	30
<b>Sailing &amp; RYA:</b>		Writing for Pleasure	63
Day Skipper	41, 42	Youth Work, Getting started	54
Diesel Engines	44		
Essential navigation & Safety Course	41		
French Pilotage: CI & adjacent France	42, 43		
Local Pilotage	43		
PPR Certificate	45		
Survival at Sea	45		